

# Zenfone 6

## ZS630KL User Guide



## Care and safety

### Guidelines



Road safety comes first. We strongly recommend not to use your device when driving or operating any type of vehicle.



This device should only be used in environments with ambient temperatures between 0°C (32°F) and 35°C (95°F).



Turn off your device in restricted areas where the use of mobile devices is prohibited. Always obey rules and regulations when in restricted areas, such as, in aircraft, movie theater, in hospitals or near medical equipment, near gas or fuel, construction sites, blasting sites and other areas.



Use only AC adapters and cables approved by ASUS for use with this device. Refer to the rating label on the bottom of your device and ensure that your power adapter complies with this rating.



Do not use damaged power cables, accessories, and other peripherals with your device.



Keep your device dry. Do not use or expose your device near liquids, rain, or moisture.



You can put your device through x-ray machines (such as those used in conveyor belts for airport security), but do not expose the device to magnetic detectors and wands.



The device screen is made of glass. If the glass gets broken, stop using the device and do not touch the broken glass parts. Immediately send device for repair to ASUS-qualified service personnel.



Do not listen at high volume levels for long periods to prevent possible hearing damage.



Disconnect the AC power before cleaning your device. Use only a clean cellulose sponge or chamois cloth when cleaning your device screen.



Send device for repair to ASUS-qualified service personnel only.

## Proper disposal



Risk of explosion if battery is replaced by an incorrect type. Dispose of used batteries according to the instructions.



DO NOT throw the battery in municipal waste. The symbol of the crossed out wheeled bin indicates that the battery should not be placed in municipal waste.



DO NOT throw this product in municipal waste. This product has been designed to enable proper reuse of parts and recycling. The symbol of the crossed out wheeled bin indicates that the product (electrical, electronic equipment and mercury-containing button cell battery) should not be placed in municipal waste. Check local regulations for disposal of electronic products.



DO NOT throw this product in fire. DO NOT short circuit the contacts. DO NOT disassemble this product.



### WARNING

Cancer and Reproductive Harm-

[www.P65Warnings.ca.gov](http://www.P65Warnings.ca.gov)

## ZenTalk Fans Forum

([http://www.asus.com/zentalk/global\\_forward.php](http://www.asus.com/zentalk/global_forward.php))



---

**NOTE:** For more legal and e-labelling information, check on your device from **Settings > System > Regulatory labels** and **About phone > Legal information**.

---

---

**NOTE:** The app descriptions shown in this manual are for reference purposes only, and may not exactly match what you see on your device.

---

# Contents

## 1 Basics

Welcome!.....	7
Get your ASUS Phone ready! .....	8
Starting for the first time .....	14
Using the touchscreen.....	15

## 2 There's no place like Home

<b>Zen Home features .....</b>	<b>18</b>
Home screen .....	18
Quick settings .....	19
Notifications .....	20
<b>Personalizing your Home screen .....</b>	<b>21</b>
Widgets .....	21
Wallpapers .....	22
Setting up the date and time.....	23
Setting up your ringtone and alert sounds.....	23
<b>Lock Screen .....</b>	<b>24</b>
Customizing your lock screen .....	24
<b>Fingerprint ID sensor.....</b>	<b>25</b>
Starting your ASUS phone for the first time .....	25
Setting up fingerprint ID from Settings .....	26
<b>Face Unlock .....</b>	<b>27</b>
Setting up face unlock from Settings.....	27

## 3 Work hard, play harder

<b>Chrome .....</b>	<b>30</b>
Launching Chrome .....	30
Sharing pages .....	31
Bookmarking pages .....	31
Clearing the browsing data .....	31
<b>Gmail.....</b>	<b>32</b>
<b>Google Calendar .....</b>	<b>33</b>
Creating events .....	33
Editing or removing events .....	33
Creating reminders .....	34
Editing or removing reminders .....	34
<b>File Manager.....</b>	<b>35</b>
<b>ASUS Data Transfer .....</b>	<b>36</b>

## 4 Keeping in touch

<b>Call in style .....</b>	<b>37</b>
Dual SIM feature.....	37
Making calls.....	39
Calling your favorite contacts .....	41
Receiving calls .....	41
Other call options.....	42

	Recording calls .....	43
	<b>Managing contacts .....</b>	<b>44</b>
	Contacts Settings .....	44
	Setting up your profile .....	44
	Adding contacts.....	45
	Marking your favorite contacts .....	46
	Social networking with your contacts .....	47
	<b>Send messages and more .....</b>	<b>48</b>
	Messages .....	48
<b>5</b>	<b>Fun and entertainment</b>	
	<b>Using a headset.....</b>	<b>49</b>
	Connecting the audio jack.....	49
	<b>Google Play Music .....</b>	<b>50</b>
<b>6</b>	<b>Your precious moments</b>	
	<b>Capture moments .....</b>	<b>51</b>
	Launching the Camera app .....	51
	Advanced camera features .....	53
	<b>Using the Gallery .....</b>	<b>54</b>
	Viewing the photo location .....	54
	Editing images.....	54
	Sharing files from the Gallery.....	55
	Deleting files from the Gallery .....	55
<b>7</b>	<b>Staying connected</b>	
	<b>Mobile network.....</b>	<b>56</b>
	Enabling the mobile network .....	56
	<b>Wi-Fi .....</b>	<b>56</b>
	Enabling Wi-Fi .....	56
	Connecting to a Wi-Fi network.....	57
	Disabling Wi-Fi.....	57
	<b>Bluetooth® .....</b>	<b>57</b>
	Enabling Bluetooth® .....	57
	Pairing your ASUS Phone to a Bluetooth® device .....	58
	Unpairing your ASUS Phone from the Bluetooth® device .....	58
	<b>Tethering .....</b>	<b>59</b>
	Wi-Fi Hotspot .....	59
	Bluetooth Tethering.....	60
<b>8</b>	<b>Travel and Maps</b>	
	<b>Weather .....</b>	<b>61</b>
	Launching the Weather app .....	61
	Weather home screen .....	62
	<b>Clock .....</b>	<b>63</b>
	Alarm clock .....	63
	World clock .....	64
	Stopwatch .....	64
	Timer .....	65

	<b>Mobile Manager.....</b>	<b>66</b>
	<b>PowerMaster .....</b>	<b>67</b>
<b>9</b>	<b>Zen Everywhere</b>	
	<b>Special Zen Tools.....</b>	<b>68</b>
	Calculator .....	68
	Sound Recorder .....	69
<b>10</b>	<b>Maintain your Zen</b>	
	<b>Keeping your device up-to-date.....</b>	<b>71</b>
	Updating your system .....	71
	Storage .....	71
	Backup.....	71
	Reset.....	71
	Securing your ASUS Phone .....	72
	<b>Appendix</b>	
	<b>Safety information.....</b>	<b>75</b>
	<b>Notices .....</b>	<b>77</b>
	<b>Index</b>	

## Welcome!

Explore the intuitive simplicity of ASUS ZenUI!

ASUS ZenUI is a charming and intuitive interface exclusively for ASUS Phones. It provides you with special apps, which are integrated in or with other apps, to fit your unique individual needs and make your life easier while letting you have fun with your ASUS Phone.



### **Camera**

With PixelMaster technology, capture those precious moments in vivid and high-quality photos and videos.



### **Messages**

Messages, an intuitive and delightful app, lets you send/receive SMS/MMS messages, as well as send group texts, photos, or audio messages. You can add emojis or stickers to your messages, share your location, archive your messages, and easily block SMS senders. You can also take photos or record videos and easily share these files.



### **File Manager**

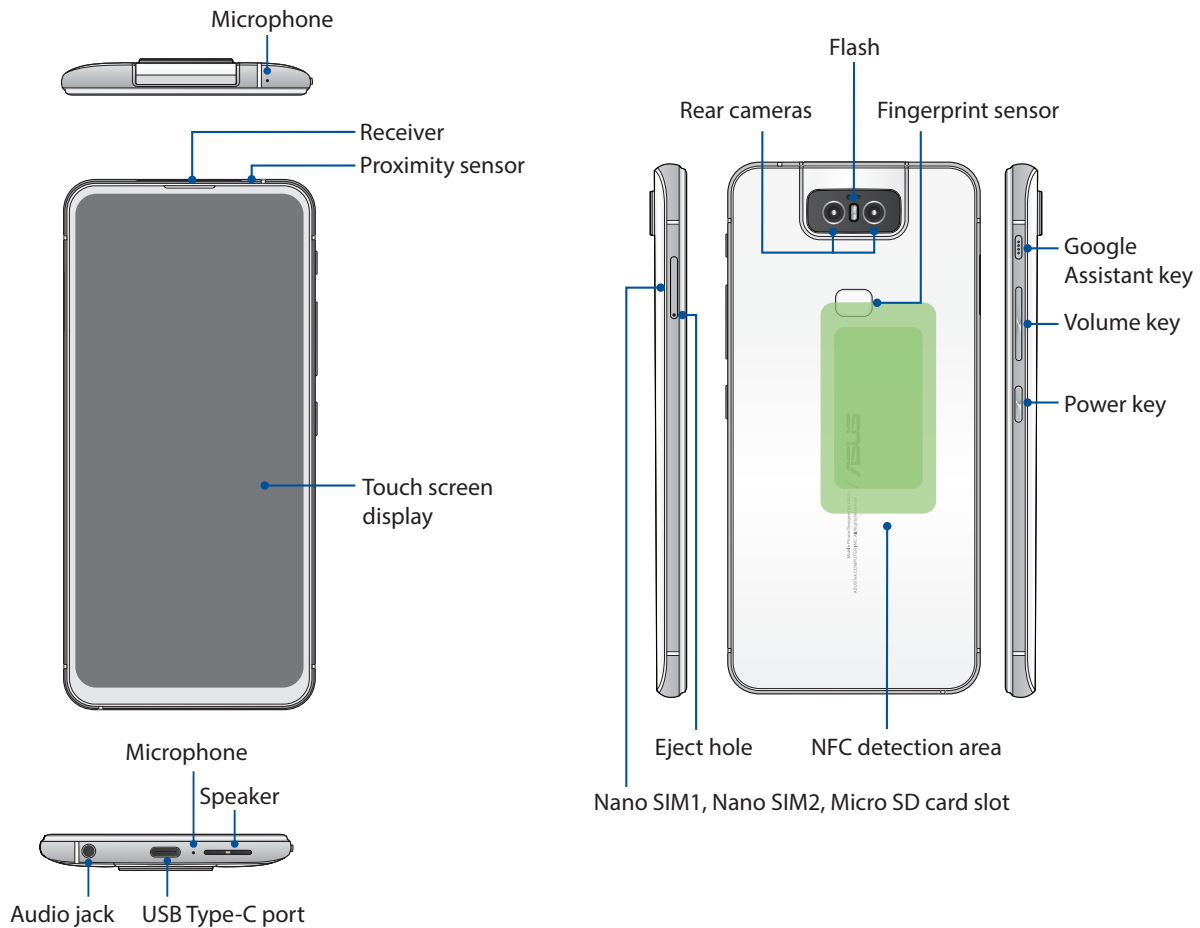
File Manager allows you to easily locate and manage your data on the internal storage of your ASUS Phone and its connected external storage devices.

**NOTE:** Availability of ASUS ZenUI apps vary per region and ASUS Phone model. Swipe up from the lower part of your Home screen to check the apps available on your ASUS Phone.

## Get your ASUS Phone ready!

### Parts and features

Take a hold of your device and have it running in a jiffy.



---

#### **WARNING!**

- To avoid network connection and battery issues:
    - DO NOT place a metallic sticker on the antenna area.
    - DO NOT use a metallic protective frame/case on your ASUS Phone.
    - DO NOT cover the antenna area with your hands or other objects while using some functions such as making calls or using the mobile data connection.
  - We recommend that you use ASUS-compatible screen protectors. Using non-ASUS-compatible screen protectors may cause your ASUS Phone's sensor to malfunction.
- 

**NOTE:** The microSD card slot supports microSD and microSDXC card formats.

---

#### **IMPORTANT!**

- We do not recommend using a screen protector as it can interfere with the proximity sensor. If you want to use a screen protector, ensure that it does not block the proximity sensor.
  - Keep the device, particularly the touch screen, dry all the time. Water or other liquids can cause the touch screen to malfunction.
-



## Installing a nano SIM card / memory card

Both nano SIM card slots support GSM/GPRS/EDGE, WCDMA/HSPA+/DC-HSPA+, FDD-LTE, and TD-LTE DSDV network bands.

---

**NOTE:** To prevent connector damage, ensure to use a standard nano SIM card without a SIM adapter or the use of a cutter.

---

Your ASUS Phone supports a microSD and microSDXC memory card with up to 2 TB capacity.

---

**NOTES:**

- Some memory cards may not be compatible with your ASUS Phone. Ensure that you use only compatible memory cards to prevent loss of data, damage to your device, or memory card, or both.
  - The microSD card is sold separately.
- 

**CAUTION!** Be extra careful when handling a nano SIM card / memory card. ASUS is not responsible for any data loss or damage incurred to your nano SIM cards / memory card.

---

### To install a Nano SIM card / memory card:

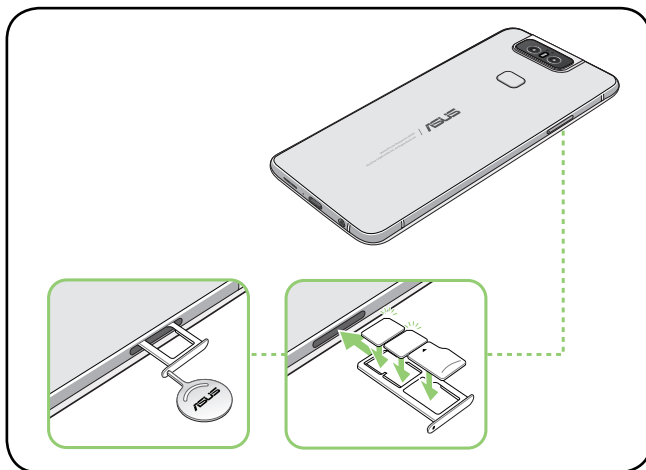
1. Push the bundled eject pin into the hole on the card slot to eject the tray out.

---

**CAUTION!**

- Be careful not to damage the card slot cover or injure your fingernails when you remove the cover.
  - Do not forcibly remove, shear, or distort the card slot cover.
  - Do not use sharp tools or solvent on your device to avoid scratches on it.
- 

2. Insert the nano SIM or microSD card into the appropriate slot.



3. Gently push the tray back in until it's securely closed.



---

**IMPORTANT!** Both nano SIM cards can connect to VoLTE 4G calling service. But only one can connect to FDD-LTE, and TD-LTE data service at a time.

---

## Removing a nano SIM /memory card

### CAUTION!

- Be extra careful when handling a nano SIM card / memory card. ASUS is not responsible for any data loss or damage incurred to your nano SIM cards / memory card.
- Eject the memory card properly to safely remove it from device. To eject the memory card, swipe down from the top of your screen and tap  > **Storage & memory**, then under Portable storage, tap  beside **SD card**.

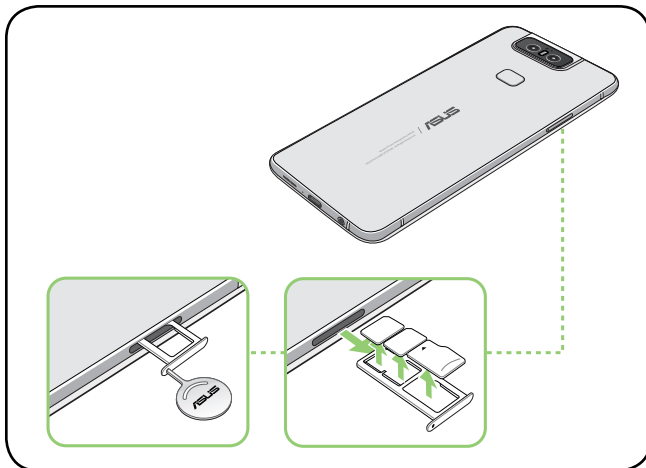
### To remove a nano SIM card / memory card:

1. Push the bundled eject pin into the hole on the card slot to eject the tray out.

### CAUTION!

- Be careful not to damage the card slot cover or injure your fingernails when you remove the cover.
- Do not forcibly remove, shear, or distort the card slot cover.
- Do not use sharp tools or solvent on your device to avoid scratches on it.

2. Remove the nano SIM or microSD card from the card slot.



3. Gently push the tray back in until it's securely closed.

## Charging your ASUS Phone

Your ASUS Phone comes partially charged but you must charge it fully before using it for the first time. Read the following important notices and cautions before charging your device.

---

### IMPORTANT!

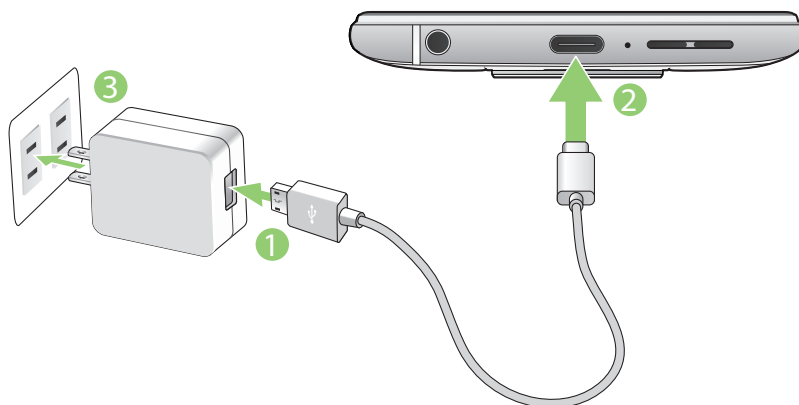
- Peel off the protective film on the AC power adapter and USB Type-C cable before using it with your device.
  - Ensure to plug the AC power adapter to a compatible power outlet. You can plug the AC power adapter to any compatible 100~240 V outlet.
  - The output voltage of the AC power adapter for this device is +9V $\overline{=}$ 2A, 18W.
  - When using your ASUS Phone while plugged-in to a power outlet, the power outlet must be near your device and easily accessible.
  - To conserve electricity, unplug the AC power adapter from the power outlet when not in use.
  - Do not place heavy objects on top of your ASUS Phone.
- 

### CAUTION!

- While charging, your ASUS Phone can become warm. This is normal, however, if your device becomes unusually hot, disconnect the USB Type-C cable from your device and send the device, including the AC power adapter and cable to an ASUS-qualified service personnel.
  - To prevent any damage to your ASUS Phone, AC adapter, or USB Type-C cable. Ensure that the USB Type-C cable, AC adapter, and your device are connected properly before charging.
- 

To charge your ASUS Phone:

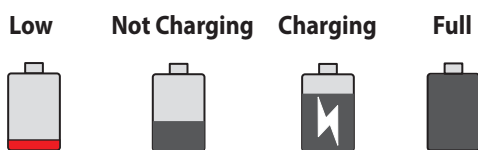
1. Connect the USB cable to the power adapter.
2. Connect the USB cable to your ASUS Phone.
3. Plug the AC power adapter to a grounded power outlet.



---

**IMPORTANT!**

- When using your ASUS Phone while it is plugged to a power outlet, the grounded power outlet must be near to the unit and easily accessible.
- When charging your ASUS Phone through your computer, ensure that you plug the USB Type-C cable to your computer's USB port.
- Avoid charging your ASUS Phone in an environment with ambient temperature of above 35°C (95°F).
- Charge your ASUS Phone for eight (8) hours before using it in battery mode for the first time.
- The status of battery charge is indicated by the following icons:

**NOTES:**

- For safety purposes, use **ONLY** the bundled power adapter and cable to avoid damaging your device and prevent the risk of injury.
  - For safety purposes, use **ONLY** the bundled power adapter and cable to charge your ASUS Phone.
  - The input voltage range between the wall outlet and this adapter is AC 100V - 240V. The output voltage of the device is +9V==2A, 18W.
- 

4. When fully-charged, disconnect the USB cable from your ASUS Phone first before unplugging the AC power adapter from the power outlet.

---

**NOTES:**

- You can use your device while charging but it may take longer to fully charge the device.
  - Charging your device via USB port of a computer may take longer to fully charge the device.
  - If your computer does not provide enough power for charging via USB port, charge your ASUS Phone using the AC power adapter plugged to a power outlet instead.
-

## Turning your ASUS Phone on or off

### Turning your device on

To turn your device on, press and hold the power button until your device vibrates and starts up.

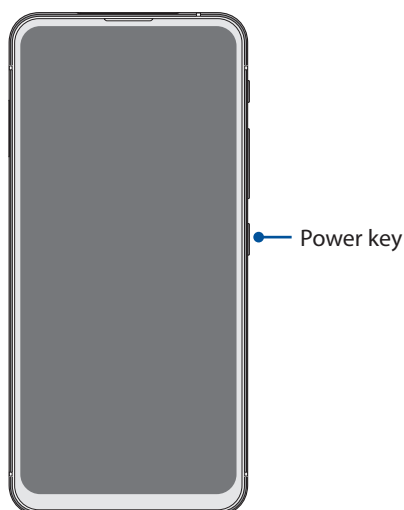
### Turning your device off

To turn your device off:

1. If your screen is turned off, press the power button to turn it on. If your screen is locked, unlock the device screen.
2. Press and hold the power button, then when prompted, tap **Power off**.

### Sleep mode

To put your device in sleep mode, press the power button once until the screen turns off.



---

**NOTE:** When your system is down, press and hold the Volume Down Key + Power Key simultaneously for 8 seconds to restart your phone. If this doesn't work, try again by pressing and holding the keys again for 12 seconds.

---

## Starting for the first time

When you turn your ASUS Phone on for the first time, Setup Wizard will guide you through the setup process. Follow the onscreen instructions to select your language, set up your mobile network, Wi-Fi and security features, and sync accounts.

Use your Google or ASUS account to set up your device, if you do not have a Google or ASUS account yet, go ahead and create one.

## Google Account

Using a Google Account allows you to fully utilize these Android OS features:

- Organize and see all your information from anywhere.
- Automatically backup all your data.
- Leverage Google services conveniently from anywhere.

## ASUS Account

Having an ASUS Account gets you to enjoy the following perks:

- Personalized ASUS support service and warranty extension for registered products.
- Receive the latest device and firmware updates.

## Battery power conservation tips

The battery charge is the lifeline of your ASUS Phone. Here are some battery power conservation tips that helps preserve the power of your ASUS Phone battery.

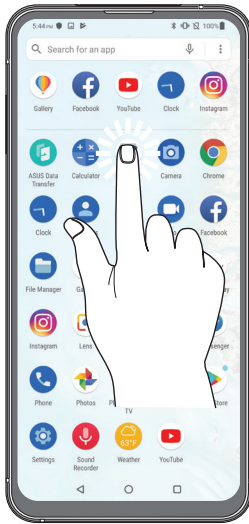
- Close all running apps that are not in use.
- When not in use, press the power button to put the device in sleep mode.
- Decrease brightness of display.
- Keep the speaker volume to a low level.
- Disable Wi-Fi feature.
- Disable Bluetooth feature.
- Disable the screen auto-rotate feature.
- Disable all auto-sync features in your device.

## Using the touchscreen

Use these gestures on the touchscreen to launch apps, access some settings, and navigate your ASUS Phone.


### Launching apps

To launch an app, simply tap on it.



### Moving or deleting items

Do any of the following:

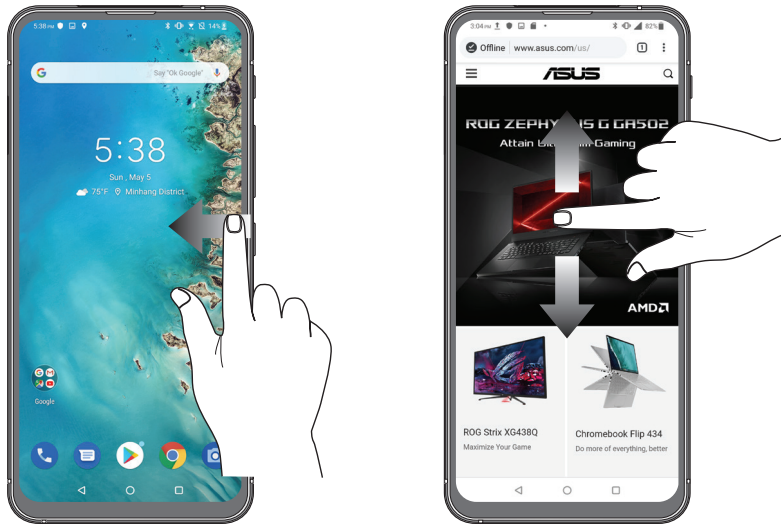
- To move an app or widget, tap and hold then drag it to the location where you want it to be.
- To delete an app or widget from the Home screen, tap and hold it then tap  .



## Moving through pages or screens

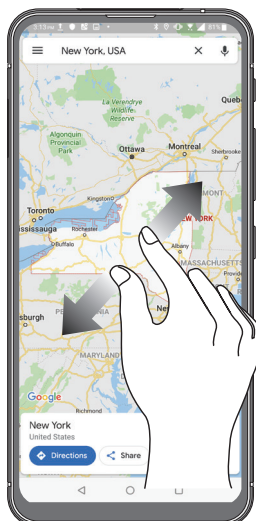
Do any of the following:

- Swipe your finger to the left or to the right to switch between screens or to open Google Search page.
- Scroll your finger up or down to go through web pages or list of items.



## Zooming in

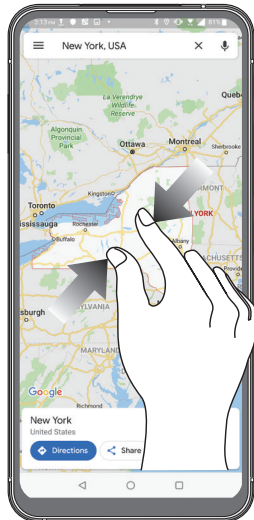
Spread apart your two fingers on the touch panel to zoom in an image in Photos or Maps, or zoom in a web page.





## Zooming out

Bring together your two fingers on the touch panel to zoom out an image in Photos or Maps, or zoom out of a web page.



---

**NOTE:** You may not be able to zoom in/out of some web pages as these pages may have been designed specifically to fit your mobile screen.

---

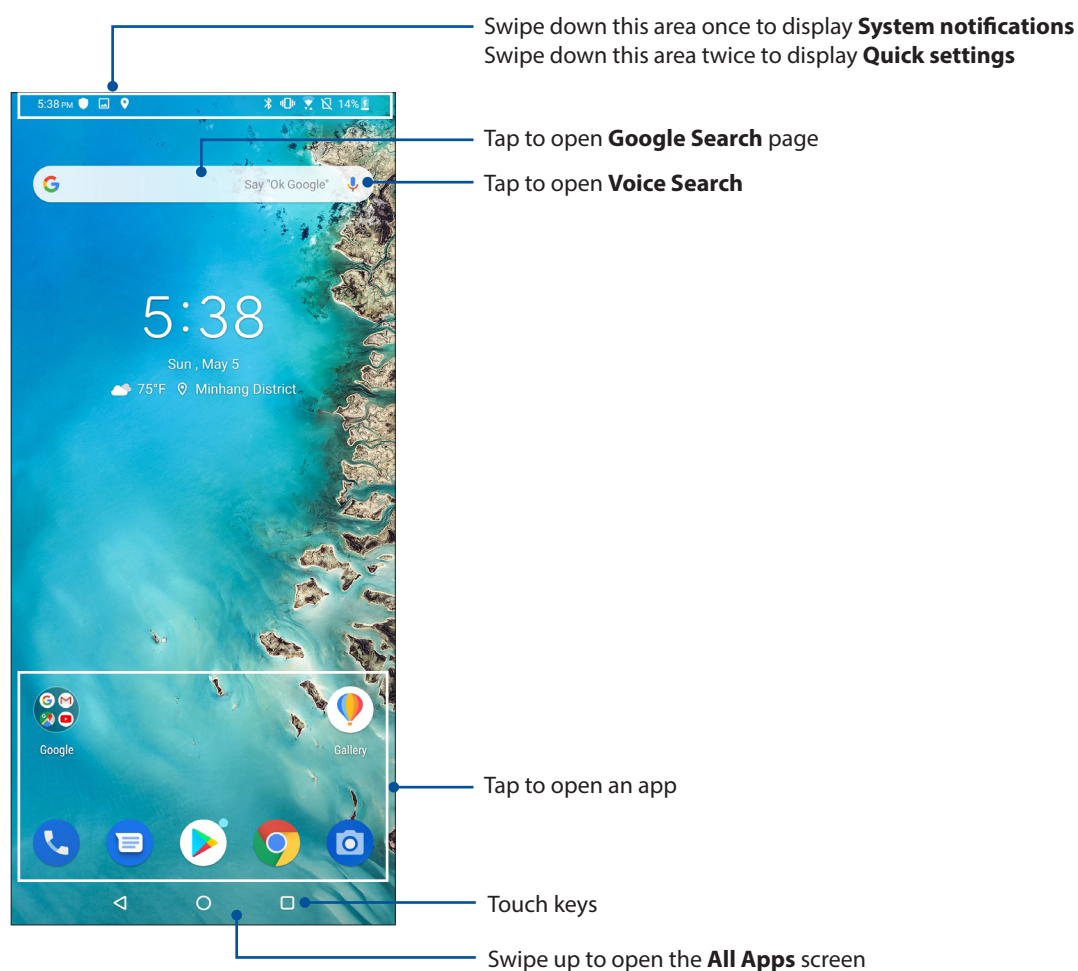
# *There's no place like Home*

# 2

## Zen Home features

### Home screen

Get reminders of important events, app and system updates, weather forecasts, and text messages from people who really matter to you, right from your Home screen.



## Quick settings

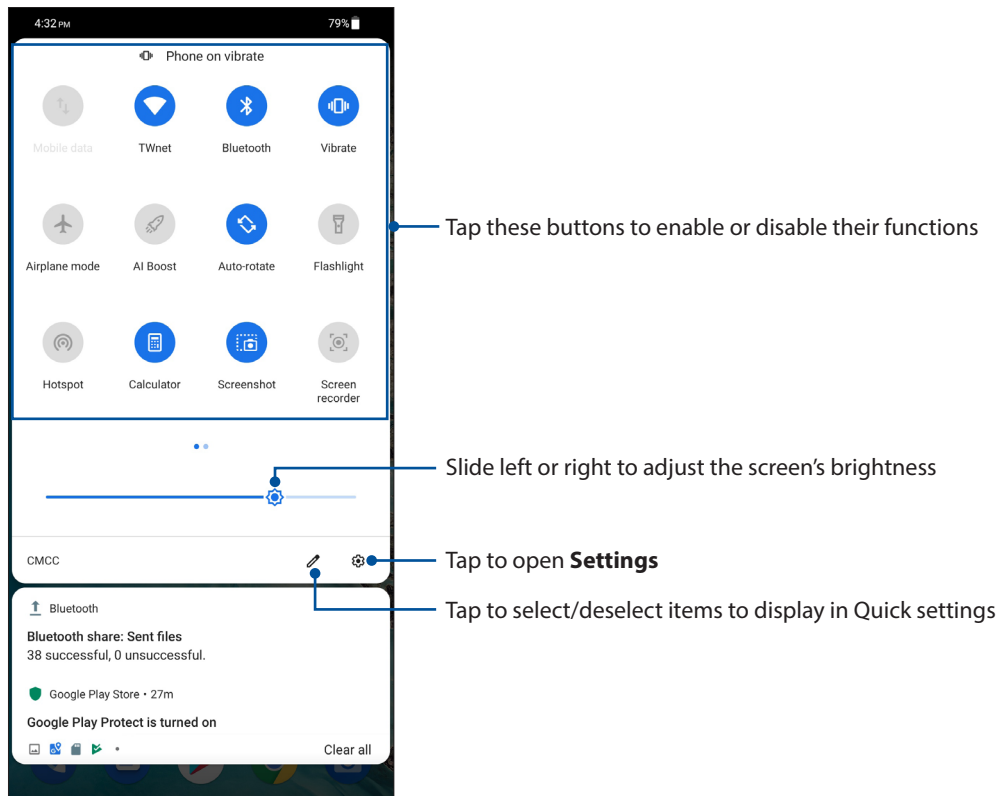
The Quick settings panel provides a one-tap access to some of the wireless features and settings of your ASUS Phone. Each of these features are represented by an icon.

To launch the Quick settings panel, swipe down twice from the top of your screen.

---



**NOTE:** A blue icon indicates that the feature is currently enabled while a gray icon indicates a disabled feature.

---




## Adding features

To add features from the Quick Settings panel:

1. Launch Quick settings then tap .
2. Swipe up **Hold and drag to add tiles**.
3. Under **Hold and drag to add tiles**, tap and drag an icon up to add it to the Quick Settings panel.
4. Tap  to go back and view the current Quick Settings panel.

## Removing features

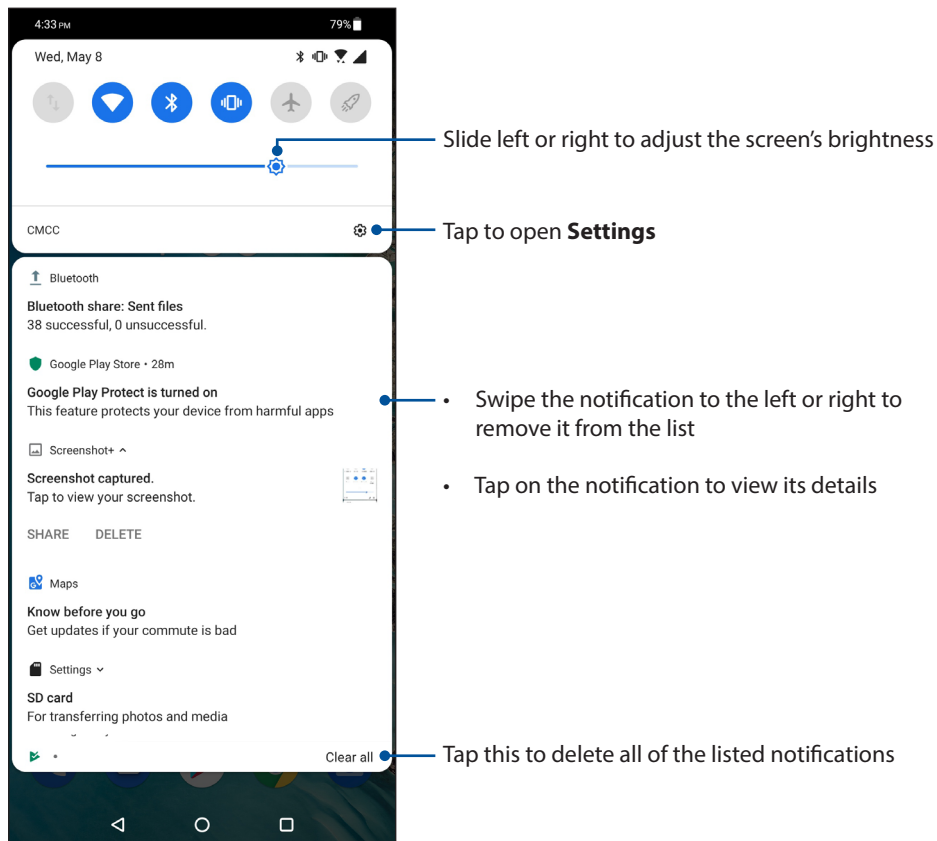
To remove existing features from the Quick Settings panel:

1. Launch Quick settings then tap .
2. Tap and drag an icon below **Hold and drag to add tiles** to remove it from the Quick Settings panel.

## Notifications

From the notifications panel, you can see the latest updates done and system changes made on your ASUS Phone. Most of these changes are data and system-related.

To launch the notifications panel, swipe down from the top of your screen.



## Personalizing your Home screen

Stamp your own personality on your Home screen. Select an attractive design as your wallpaper, and add widgets for a quick review of important info. You can also add more pages so you can add and quickly access or view more apps or widgets on your Home screen.

To launch the Manage Home screen, tap and hold an empty area on your Home screen.



## Widgets

You can put widgets, which are small dynamic apps, on your Home screen. Widgets provide you with quick-views of the weather forecast, calendar events information, battery status, and more.

### Adding widgets

To add a widget:

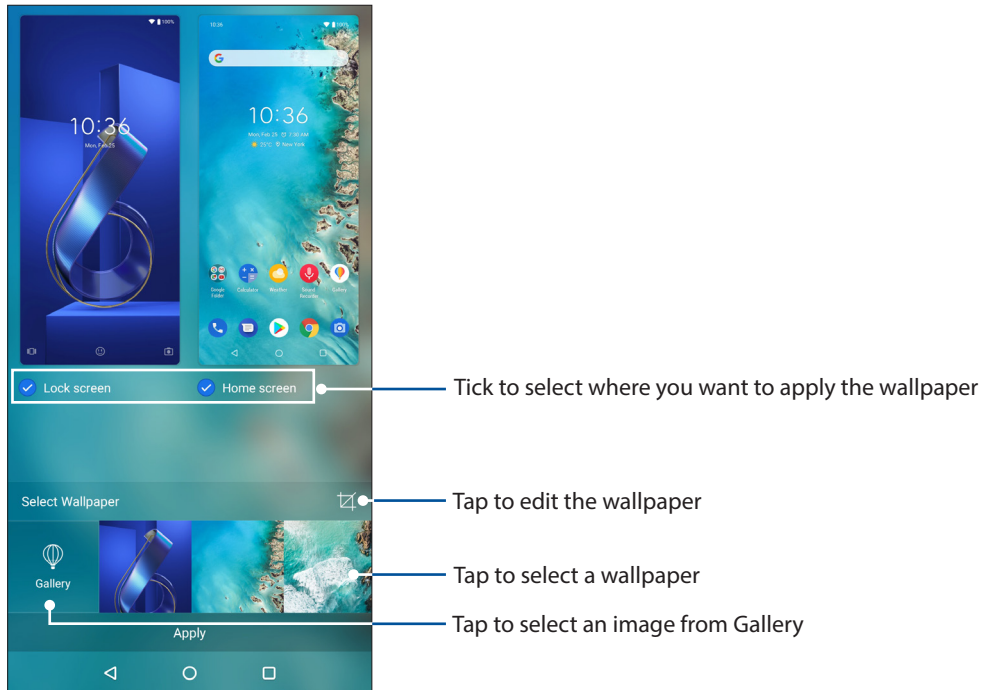
1. Tap and hold an empty area on your Home screen and select **Widgets**.
2. From the Widgets screen, tap and hold a widget, then drag it to an empty area on your Home screen.

### Removing widgets

From your Home screen, tap and hold a widget, then drag it to **Remove** on top of your screen.

## Wallpapers

Let your apps, icons, and other Zen elements sit on an attractively designed wallpaper. You may add a translucent background tint to your wallpaper for readability and clarity. You can also select an animated wallpaper to make your screen come alive.



## Applying wallpaper

To apply wallpaper:

1. Tap and hold an empty area on your Home screen and select **Wallpapers**.
2. Select to set wallpaper to **Lock screen** or **Home screen**.
3. Select a wallpaper, and then tap **Apply**.

---

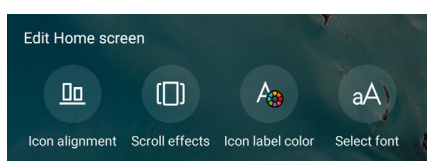
NOTE: You can also set up your wallpaper settings from **Settings > Display > Wallpapers**.

---

## Editing your Home screen

You can extend your Home screen, select a scroll effect, change the icon and font, adjust the size and color of the icon and font, and align the icons to the top or bottom of your screen.


1. Tap and hold an empty area on your Home screen and select **Edit Home screen**.
2. Tap a feature to edit your Home screen.



## Setting up the date and time

By default, the date and time displayed on your Home screen automatically syncs with your mobile provider's settings.

To change the date and time settings:

1. Launch the Settings screen by doing any of the following:
  - Launch Quick Settings then tap .
  - Swipe up from the lower part of your Home screen then tap **Settings**.
2. Scroll down the Settings screen and select **System > Date & time**.
3. Slide **Automatic date & time** and **Automatic time zone** to **OFF**.
4. Adjust the date and time.
5. Select the time zone.
6. You can opt to use the 24-hour format, if you prefer.

---


**NOTE:** See also [Clock](#).

---

## Setting up your ringtone and alert sounds

Set up the sound for your phone ringtone, notifications such as text messages, emails, and event alerts. You can also choose to enable or disable the dial pad touch tones, touch sounds, screen lock sound, or you can choose to have your ASUS Phone vibrate when you tap on it.

To set up the sound settings:

1. Launch the Settings screen by doing any of the following:
  - Launch Quick Settings then tap .
  - Swipe up from the lower part of your Home screen then tap **Settings**.
2. Select **Sounds & vibration** and set up your preferred sound settings.

## Lock Screen

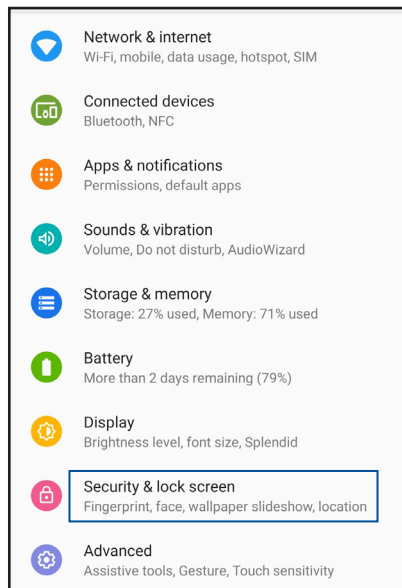
By default, the lock screen appears after turning on your device and while waking it up from sleep mode. From the lock screen, you can proceed to your device's Android® system by swiping on your touch screen panel.

Your device's lock screen can also be customized to regulate access to your mobile data and apps.

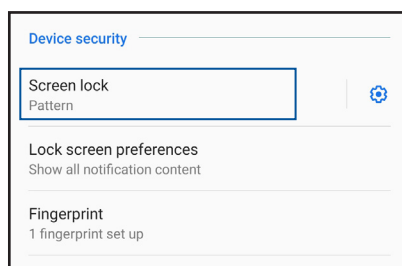
## Customizing your lock screen

If you want to change your lock screen settings from the default **Swipe** option, refer to the following steps:

1. Launch Quick Settings then tap .
2. Select **Security & lock screen**.



3. In the next screen, tap **Screen lock**.



4. Tap the screen lock option you would like to use.

---

**NOTE:** For more details, see [Securing your ASUS Phone](#).

---



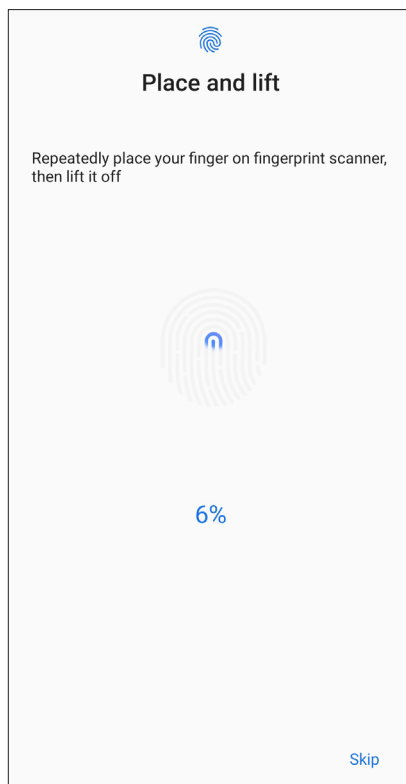
## Fingerprint ID sensor

Fingerprint ID sensor prevents others from using your ASUS phone without your permission. You can use your fingerprint to unlock your device, access your phone calls and data. When you set up your fingerprint ID, you also need to set up your screen lock method for device startup.

### Starting your ASUS phone for the first time

To set up your fingerprint ID when using your ASUS Phone for the first time:


1. Ensure that the fingerprint identification module and your finger are clean and dry.
2. From the Welcome page, follow the on-screen instructions to the **Protect your phone** page and tap **Set up fingerprint**.
3. Tap **Next** to choose a screen lock method, and then follow the instructions to the **Locate fingerprint scanner** page, and tap **Next**.
4. Find the fingerprint scanner at the back of your device, adjust your finger and try to cover different areas of your finger repeatedly until your fingerprint is captured.

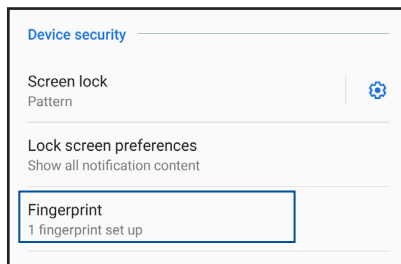


5. Tap **Continue** to complete the setup.

## Setting up fingerprint ID from Settings

To set up your fingerprint ID from **Settings**:

1. Ensure that the fingerprint scanner and your finger are clean and dry.
2. Launch the Settings screen by doing any of the following:
  - Launch Quick Settings then tap .
  - Swipe up from the lower part of your Home screen then tap **Settings**.
3. Scroll down the **Settings** screen and select **Security & lock screen** > **Fingerprint**.



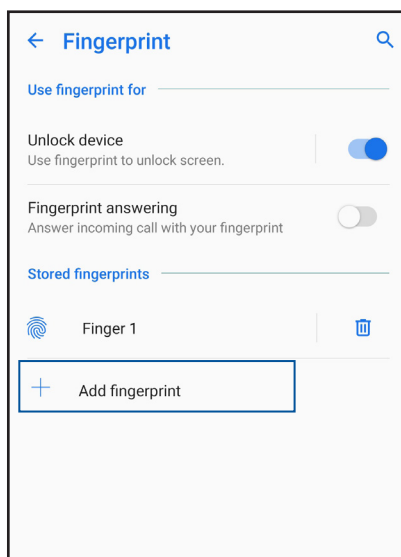
4. Unlock your phone if it's secured. If not, follow the instructions to set up your backup screen lock method.

---

**NOTE:** For more details, see [Securing your ASUS Phone](#).

---

5. Tap **Add fingerprint**.




6. Repeatedly place-and-lift your finger on the scanner until your fingerprint is captured.
7. Tap **OK** to complete the setup.

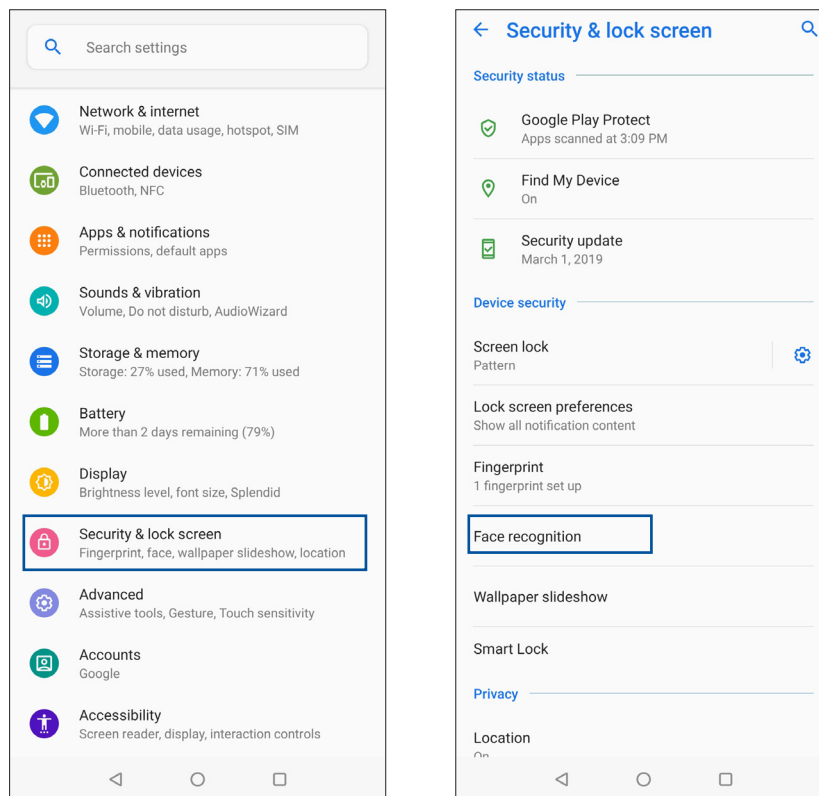
# Face Unlock

Face unlock prevents others from using your ASUS phone without your permission effortlessly. You can light up your ASUS Phone's screen and look at it to unlock your device, access your phone's home screen in one second. When you set up your face unlock, you also need to set up your screen lock method for device startup.

## Setting up face unlock from Settings

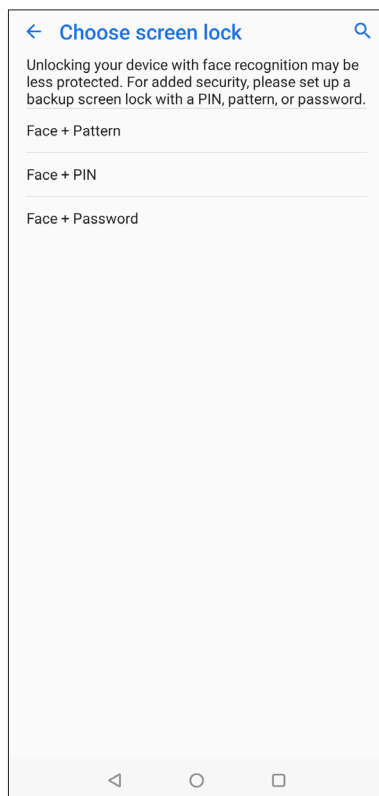
To set up face unlock from **Settings**:

1. Launch the Settings screen by doing any of the following:
  - Launch Quick settings then tap .
  - Swipe up from the lower part of your Home screen and tap **Settings**.
2. Scroll down the Settings screen and select **Security & lock screen** > **Face recognition**.

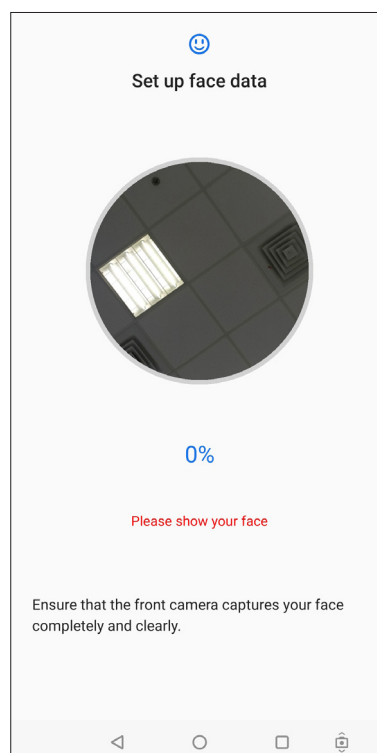
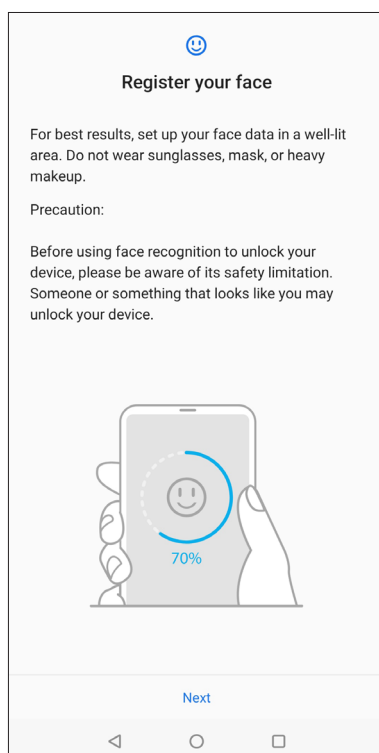


3. Tap **Continue**.

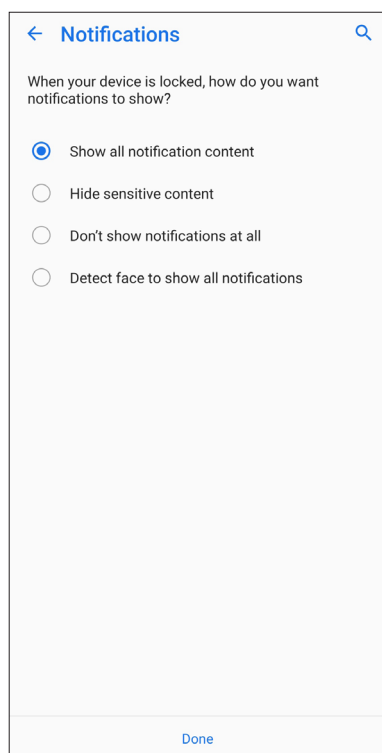
4. Follow the instructions to set up your backup screen lock method.



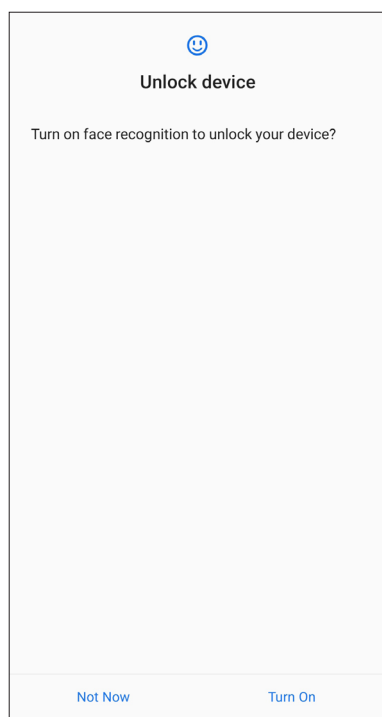
5. Tap **Next** and follow the instructions to register your face.



6. Select how you want to display your notifications on the lock screen, then tap **Done**.



7. When finished, tap **Turn On** to enable face recognition to unlock your phone.



---

**NOTES:**

- Show your mouth, nose and opened eyes while using face unlock feature.
  - Wearing sunglasses or insufficient light will lead to failure of face unlock.
-

# Work hard, play harder

# 3

## Chrome

Chrome for Android lets you enjoy the same fast, secure and stable web browsing experience as that on the desktop Chrome. Sign in to your Google account to sync tabs, bookmarks, and browsing history across all your devices. If you don't have a [Google account](#), register for one.

---

**NOTE:** For details on creating a Google account, see [Gmail](#).


---

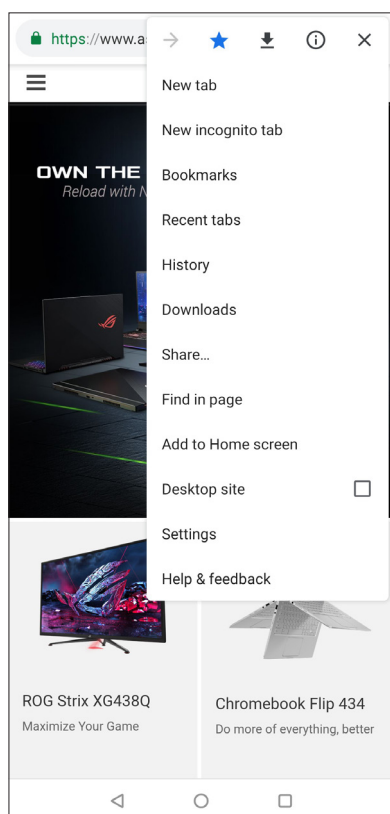
**IMPORTANT!** Before doing any Internet surfing or Internet-related activities, ensure that your ASUS Phone is connected to a Wi-Fi or mobile network. For more details, see [Staying connected](#).

---

## Launching Chrome


From your Home screen, do any of the following to launch Chrome:

- Tap .
- Swipe up from the lower part of your Home screen then tap **Chrome**.



## Sharing pages




Share interesting pages from your ASUS Phone to others via an email account, cloud storage account, Bluetooth, or other ASUS Phone apps.

1. Launch Chrome.
2. From a web page, tap  > **Share...**
3. Tap the account or app that you want to use as medium in sharing the page.

## Bookmarking pages


Bookmark your favorite pages or websites so you can go back and browse them again.

To bookmark a page:

From the page, tap  >  . To view your favorite pages, tap  > **Bookmarks**, then select the page you want to view or access.

## Clearing the browsing data

Clear the browsing data that are temporarily stored in your ASUS Phone to improve the loading performance of your Chrome browser. The browsing data includes browsing history, cache, cookies/site data, saved passwords, and autofill data.

1. Launch the browser.
2. Tap  > **Settings** > **Privacy** > **Clear browsing data**.
3. Select the browsing data that you want to delete.
4. When done, tap **Clear data**.

## Gmail


Use Gmail to set up your Google account to get into Google-related services and apps as well as receive, send, and browse emails right from your ASUS Phone. You can also set up other email accounts such as Yahoo or your work email account via Gmail.

---

**IMPORTANT!** Your ASUS Phone must be connected to a Wi-Fi or mobile network so you can add an email account or send and receive emails from added accounts. For more details, see [Staying connected](#).

---

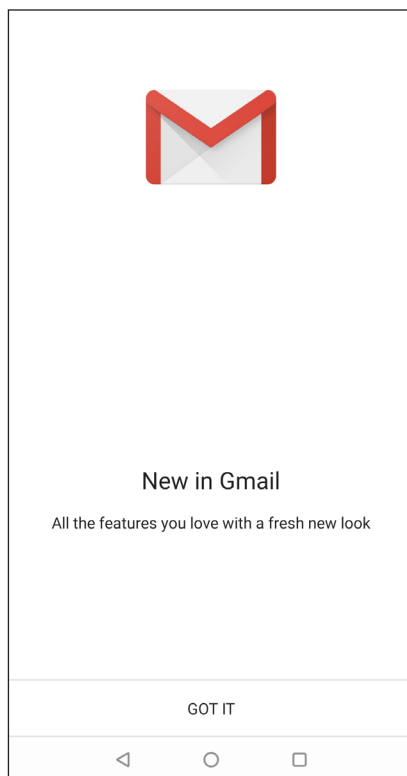
To set up your Google account:

1. From your Home screen, tap **Google** > .
2. Tap **Set up email**.
3. Select **Google**.
4. Enter your email address. To create a new Google account, tap **Create account**.
5. Follow the next steps to sign in to your Google account.

---

**NOTE:** If you want to set up your work account on your ASUS Phone, ask for the email settings from your network administrator.

---









# Google Calendar

Bring your schedule to life and keep track of all your important events or reminders. Events that you create or edit will automatically sync with all Google Calendar versions that you've logged into.



## Creating events

To create an event:

1. From the Home screen, tap **Google > Calendar**.
2. Tap  then tap **Event**.
3. Enter your event name, and select the date and time for the event. You may set the event as an all-day or recurring event.
  - All-day event: From the **All-day** field, move the slider to the right.
  - Recurring event: Tap **More options** > , then select how often you want the event to recur or repeat.
4. To set the time zone, tap **More options** > , then enter the country whose time zone you want displayed.
5. From the **Add location** field, enter the venue or location of the event.
6. Tap , then you may select or set the time or day to get a notification or reminder about the event.
7. From the **Invite people** field, enter the email addresses of your guests to the event.
8. You may also add note or attachment from the **Add note** or **Add attachment** field.
9. Once finished, tap **Save**.



## Editing or removing events

To edit or remove an event:

1. From the Home screen, tap **Google > Calendar**.
2. Tap the event that you want to edit or delete.
3. To edit the event, tap  and make the necessary changes. To remove the event, tap  > **Delete**, then tap **Delete** to confirm the deletion.



## Creating reminders

To create a reminder:

1. From the Home screen, **Google > Calendar**.
2. Tap  then tap **Reminder**.
3. Enter your reminder name.
4. Set the date and time for the reminder. You may set the reminder as an all-day or recurring reminder.
  - All-day reminder: From the **All day** field, move the slider to the right.
  - Recurring reminder: Tap , then select how often you want the reminder to recur or repeat.
5. Once finished, tap **Save**.

## Editing or removing reminders

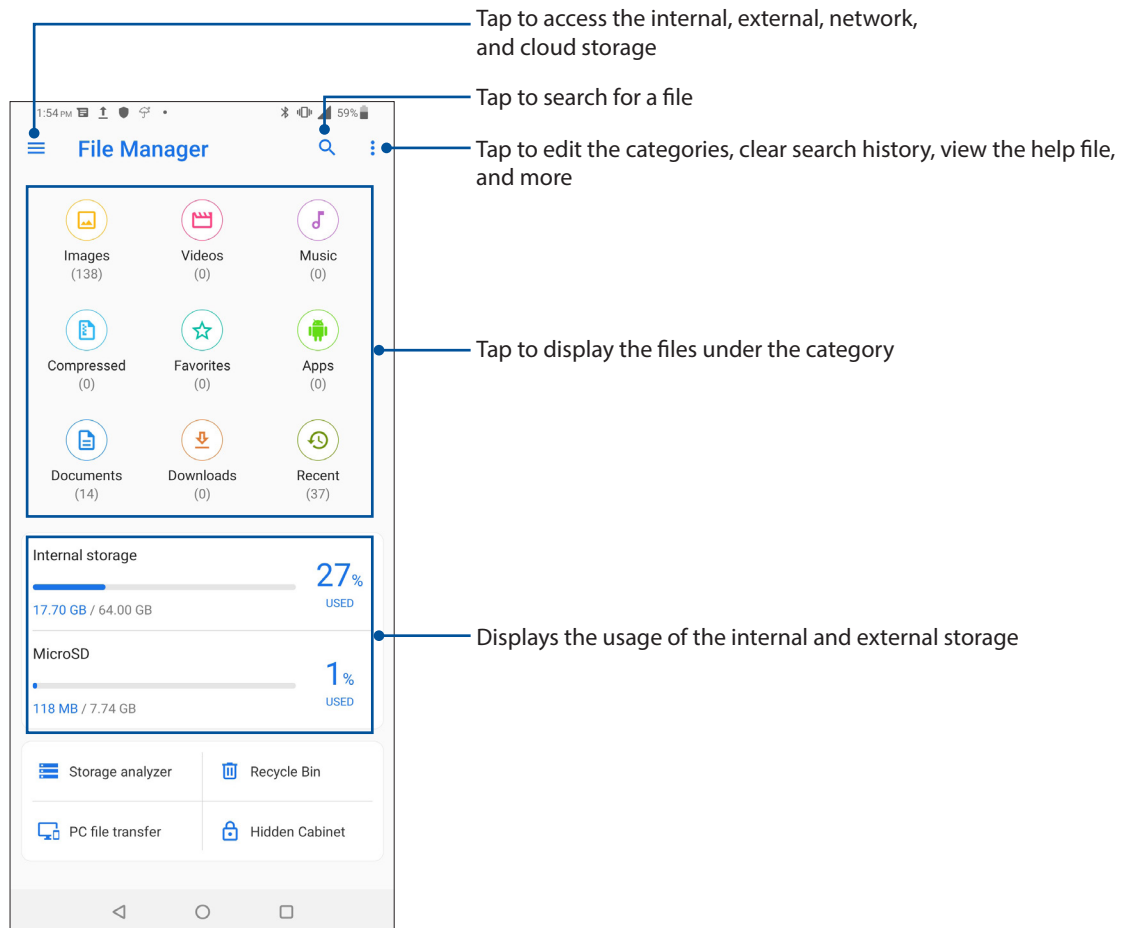
To edit or remove a reminder:

1. Tap **Google > Calendar**.
2. Tap the reminder that you want to edit or delete.
3. To edit the reminder, tap  and make the necessary changes. To remove the reminder, tap  > **Delete**, then tap **Delete** to confirm the deletion.

## File Manager

Using File Manager allows you to easily locate and manage your data on the internal storage of your ROG Phone and its connected external storage devices.

To launch File Manager, swipe up from the lower part of your Home screen then tap **File Manager**.



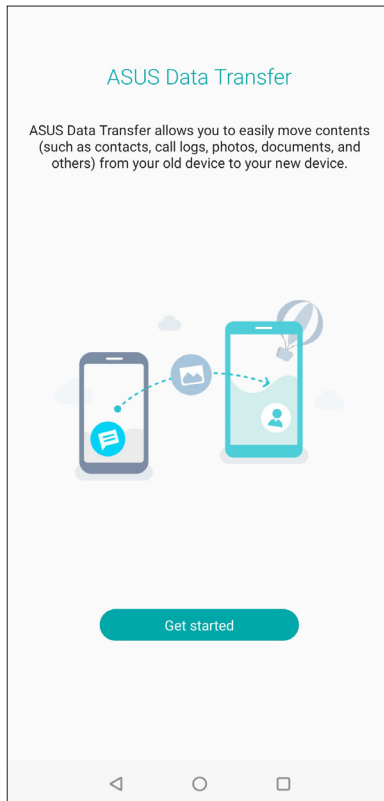
**IMPORTANT!** Before accessing files saved on the network and cloud storage, ensure that Wi-Fi or mobile network is enabled on your ROG Phone. For details, see [Staying connected](#).

## ASUS Data Transfer

Wirelessly transfer your data such as contacts, call logs, or photos from your old mobile device to your ASUS Phone.

To use ASUS Data Transfer:

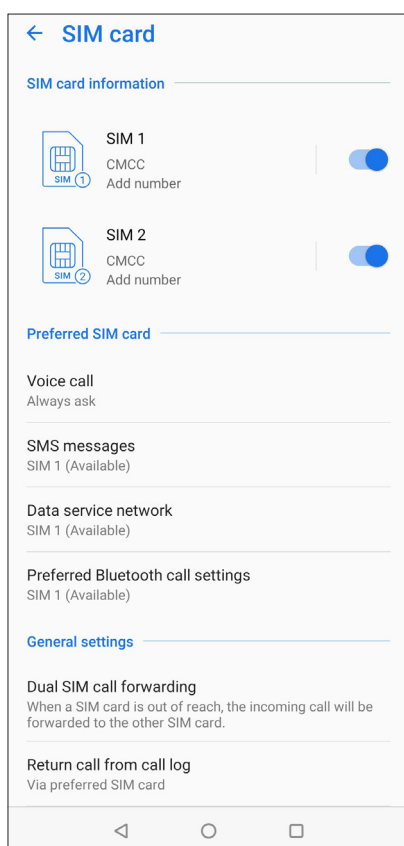
1. Swipe up from the lower part of your Home screen then tap **ASUS Data Transfer**.
2. Tap **Get Started** then follow the onscreen instructions to complete the data transfer process.



## Call in style

### Dual SIM feature

The dual SIM feature of your ASUS Phone lets you manage the settings of the installed Nano SIM cards. With this feature, you can enable/disable Nano SIM cards, assign SIM names, or set one as a preferred network.



### Renaming your Nano SIM cards

Change the names of your Nano SIM cards on your ASUS Phone so that you can identify them easily.

To change the names of your Nano SIM cards, tap **SIM 1 name: SIM 1** or **SIM 2 name: SIM 2** then key in the names for your Nano SIM cards.

---

**NOTE:** If your SIMs have different mobile service providers, we recommend you to use the names of these providers for your SIM names. If both SIMs have the same mobile service provider, we recommend you to use the mobile numbers for your SIM names.

---

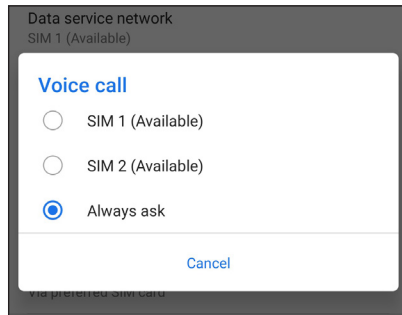
## Assigning a preferred SIM card

Assign a SIM card as your preferred SIM for voice calls, SMS messages, and data services.

### SIM card for voice calls

When you make a call, your ASUS Phone automatically uses the preferred SIM card to connect the call.

To assign a SIM card for voice calls, tap **Voice call** then tap the SIM that you want to use.



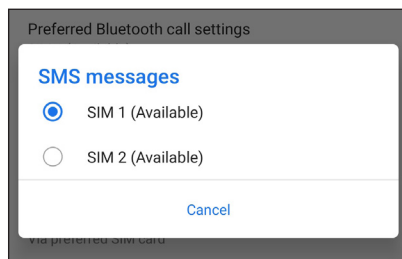
---

**IMPORTANT!** You can only use this feature if you make a call from your contacts list.

---

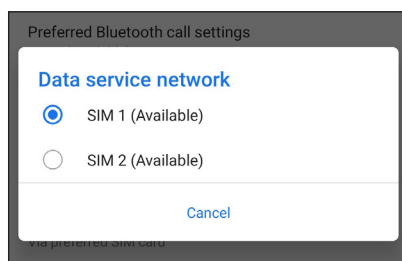
### SIM card for SMS messages

To assign a SIM card for SMS messages, tap **SMS messages** then select from **SIM 1** or **SIM 2**.



### SIM card for data service

To assign a SIM card for data service, tap **Data service network** then select from **SIM 1** or **SIM 2**.



## Making calls

Your ASUS Phone offers you many ways to make a call. Call your friends from your contacts list, smart dial to quickly place a call, or enter a speed-dial number to call your frequently-called contact.


---

**NOTE:** Organize your contacts in the Contacts app. For details, see [Managing contacts](#).

---


## Launching the Phone app

From your Home screen, do any of the following to launch the Phone app:

- Tap .
- Swipe up from the lower part of your Home screen then tap **Phone**.

## Dialing a phone number

Use the Phone app to directly dial a phone number.

1. From your Home screen, tap  then tap the number keys.
2. Select from call buttons **SIM 1** or **SIM 2** to dial the number.

---

**NOTE:** The labels of the call buttons may vary depending on the setting that you made to your SIM cards. For more details, see [Dual SIM feature](#).

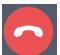
---

## Dialing an extension number

When you need to call an extension number, you can do any of these steps to skip the voice prompts.

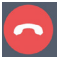
### Prompting for confirmation of an extension number

You can insert a confirmation prompt for the extension number after dialing the main number.

1. From the Phone app, enter the main number.
2. To insert a confirmation prompt, tap and hold # until a semi-colon (;) appears.
3. Enter the extension number.
4. Select from call buttons **SIM 1** or **SIM 2** to make the call.
5. When prompted, tap **Yes** to confirm the extension number.
6. Tap  to end the call.

## Auto-dialing an extension number

You can insert a short or long pause after dialing the main number, then the extension number is dialed automatically.

1. From the Phone app, enter the main number.
2. To insert a pause, tap and hold \* until a comma (,) appears.
3. Enter the extension number.
4. Select from call buttons **SIM 1** or **SIM 2** to place the call.
5. Tap  to end the call.

## Smart dialing your contacts

As you enter the first few numbers or letters of your contact's name, Smart Dial filters through your contacts list or call logs and provides you with possible matches. You can check if the contact you're trying to reach is on the list of possible matches, then you can quickly place that call.

1. Launch the Phone app then enter the number or name of the contact in the Search field.
2. From the list of possible matches, tap the contact you wish to call. If the contact is not on list, enter the complete number or name of the contact.
3. Select from call buttons **SIM 1** or **SIM 2** to make the call.


---

**NOTE:** The labels of the call buttons may vary depending on the setting that you made to your SIM cards. For more details, see also [Dual SIM feature](#).

---

## Calling from Contacts app

Use the Contacts app to make a call from your contacts list.

1. Launch the Contacts app.
2. Tap the contact name then tap the number that you wish to dial.
3. If there are two SIM cards installed, tap the SIM card from which you want to make the call.
4. Tap  to end the call.

---


**NOTE:** To view all contacts from all contact accounts, tap **Contacts to display** dropdown list then tick all accounts.

---



## Calling your favorite contacts




When you add a contact to your Favorites list, you can quickly call the contact from the Contacts app.

1. Launch the Contacts app.
2. Tap **Groups** > **Favorites** to display your Favorites list, then tap your favorite contact whom you want to call.
3. Tap  to end the call.

## Receiving calls

The touch screen of your ASUS Phone lights up when there is an incoming call. The display of the incoming call also varies, depending on the status of your ASUS Phone.

## Answering calls


Slide  to  to answer or to  to reject the call.


## Managing your call logs

From your call logs, you can call back your missed calls, save calls to your contacts list, or redial your recently-called number or contact.

## Saving calls to Contacts


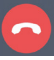
You can add a call/number from your call logs to your contacts list.

1. From the Phone app, tap **Recents** to display your call logs.
2. Tap > beside the number that you want to add to your contacts list.
3. Tap  at the upper right corner of your screen, and then tap **Add to contacts**.
4. Tap **Create new contact** to add a new entry to your contacts list.

Tap **Add to an existing contact**, select a contact, choose whether to overwrite the contact's number with this new one or add a new entry, then tap .

## Redialing your last-called number

To redial your last-called number:

1. From the Phone app, tap **Recents** to display your call logs.
2. Tap  beside your last-called number to redial the number.
3. Tap  to end the call.

## Other call options

During an active call, tap any of the possible call options for when a call is in progress.



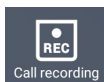
### Contacts

Opens the Contacts app.



### Auto redial

Turns on or off the auto redialing feature.



### Record

Records an active call.

**IMPORTANT!** Before recording an active call, it is dictated by most local laws to ask permission from the other person or persons on the other line.

**NOTE:** For more details, refer to the section [Recording calls](#).



### Speakerphone

Turns the speakerphone on or off.



### Microphone

Turns the microphone for the active call on or off. When the microphone is off or in mute mode, you can hear the caller but the caller can't hear you.



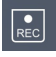
### Keypad

Brings up the keypad.

## Recording calls

Your ASUS Phone allows you to record a conversation for future reference or information.

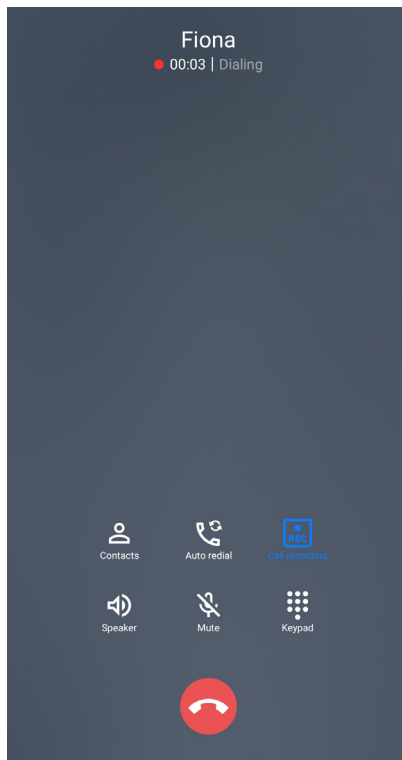
1. Call a contact or dial a number.

2. Tap  to record the call.

---

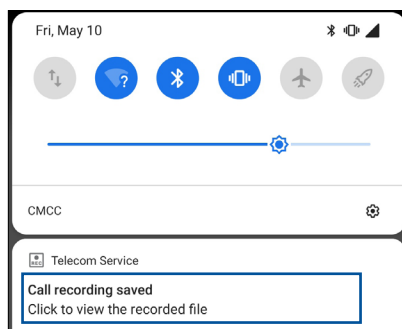
**IMPORTANT!** Before recording a call, ensure that you ask for permission from the other party or parties.

---



3. To stop recording, tap . This  icon appears on the system notification bar.

4. Swipe down from the top of the screen, and then tap **Call recording saved** notification to view the recorded conversation.




## Managing contacts

Organize your contacts and easily stay in touch with them via calls, SMS messages, emails, or social networks. Group your contacts as Favorites to quickly get in touch with them, or group them as VIPs to get notified about any upcoming events, missed calls, or unread messages.

You can also sync your contacts with your email or social network accounts, link contacts' info for easy access in one place, or filter the contacts you want to keep in touch with.

To launch the Contacts app, swipe up from the lower part of your Home screen then tap **Contacts**.

## Contacts Settings

Select how you would want to display your contacts from the Contacts settings. Such display options include displaying only those contacts with phones, sorting list by first/last name, or viewing contact names as first/last names first. To set up your Contacts settings, tap  > **Settings** from the Contacts app.

## Setting up your profile


Make your ASUS Phone truly your own and set up your profile info.

1. Launch the Contacts app then tap **Set up my profile** or **ME**.

---

**NOTE:** ME appears when you've set up your Google account on your ASUS Phone.

---

2. Fill in your info such as mobile or home number. To add other info, tap **Add another field**.
3. When you've completed your info, tap .

## Adding contacts

Add contacts to your device, corporate, Google, or other email accounts and fill in more important contact information such as contact numbers, email addresses, special events for VIPs, and more.

1. Launch the Contacts app then tap **+** .
2. Select **Device**.

---

### NOTES:

- You can also save the contact to your SIM card or an email account.
  - If you don't have an email account, tap **Add account** then create one.
- 

3. Fill in the necessary information such as name, mobile or home number, and email address.
4. If you want to add other contact information, tap **Add another field**.
5. When you've completed the info, tap **✓** .

## Adding an extension number to a contact number

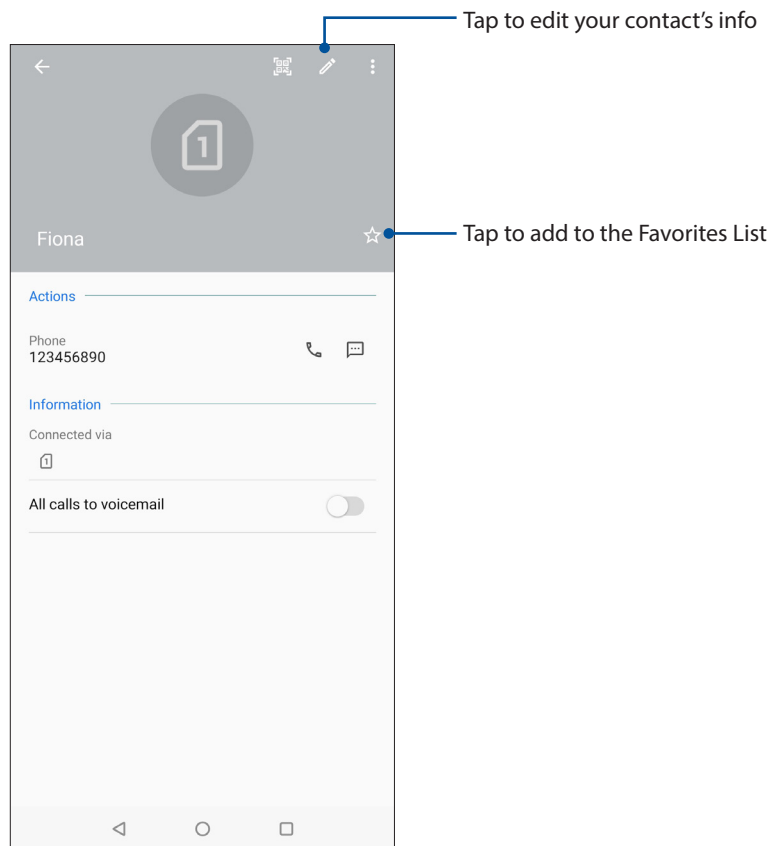
You can add a contact's extension number to skip the voice prompts when making a call.

1. In the contact's information screen, enter the contact's main number and extension number in either of these two ways:
  - Insert a comma (,) after the main number, then enter the contact's extension number. There'll be a short pause before the extension number is dialed automatically. To extend the pause, tap **Pause** to insert another comma.
  - Insert a semi-colon (;) after the main number, then enter the contact's extension number. When dialing the contact number, you'll be prompted to confirm the extension number. Tap **Yes** on the confirmation message.
2. When you've completed the info, tap **✓** .

## Customizing your contact's profile


Edit your contact's info, add a photo, set a ringtone, or take a photo as a cover for your contact's profile.

1. Launch the Contacts app then select the contact whose info or profile you want to edit or customize.
2. Make the changes from the contact's profile page.



## Marking your favorite contacts

Set your frequently-called contacts as your favorites to be able to call them quickly from the Phone app.

1. Swipe up from the lower part of your Home screen then tap **Contacts**.
2. Select the contact that you want to mark as a favorite.
3. Tap . The contact is added to your Favorites List in the Phone app.

---




### NOTES:

- To view your Favorites list, swipe up from the lower part of your Home screen then tap **Contacts > Groups > Favorites**.
  - For more details, refer to the section [Calling your favorite contacts](#).
-

## Managing your block list


### Blocking numbers

Create your list of blocked numbers to avoid receiving any unwanted calls or messages. Your blocked calls and messages will be saved to the Block List archive.

1. Swipe up from the lower part of your Home screen then tap **Contacts**.
2. Tap  > **Settings** > **Call blocking & block list** > **Block list**.
3. Tap , then do any of the following:
  - To block a contact, tap **Choose from contacts**, then select the contact you want to block from your contacts list.
  - To block a number from the recent call logs, tap **Choose from recent call logs**, then select the contact you want to block from your contacts list.
  - To block a number, tap **Enter a number** then enter the number that you want to block.
  - To block a SIP number, tap **Enter a SIP number** then enter the number that you want to block.
4. When done, tap .

### Unblocking numbers

You may remove a blocked number from your list and receive calls or messages from the number again.

1. Swipe up from the lower part of your Home screen then tap **Contacts**.
2. Tap  > **Settings** > **Call blocking & block list** > **Block list**.
3. Tap the contact or number that you want to unblock then tap **Remove from block list**.

### Social networking with your contacts

Integrating the social network accounts of your contacts makes it easier for you to view their profiles, news, and social feeds. Stay updated with the activities of your contacts in real time.


---

**IMPORTANT!** Before you can integrate social network accounts of your contacts, you need to log in to your social network account and sync its settings.

---

## Syncing your social network account

Sync your social network account to add the social network accounts of your contacts to your ASUS Phone.


1. Launch the Settings screen by doing any of the following:
  - Launch Quick Settings then tap .
  - Swipe up from the lower part of your Home screen then tap **Settings**.
2. From the **Settings** screen, tap your social network account under **Accounts** section.
3. Slide **Automatically sync data** to **ON** to sync the social network accounts of your contacts.
4. Launch the Contacts app to view your contacts list. Tap the contact, you will see which social network the contact is from.

## Send messages and more

### Messages

Messages, an intuitive and delightful app, lets you send/receive SMS/MMS messages, as well as send group texts, photos, or audio messages. You can add emojis or stickers to your messages, share your location, archive your messages, and easily block SMS senders. You can also take photos or record videos and easily share these files.

### Sending messages

1. From the Home screen, tap .
2. Tap **Start chat**, then select the contact whom you want to send a message to.
3. Start composing your message in the message field.
4. When you're done, select the SIM account where you're going to send your message from.

### Replying to messages

1. Tap your message alert from your Home screen or Lock screen.
2. Start composing your reply in the message field.
3. When you're done, select the SIM account where you're going to send your reply from.



# Fun and entertainment

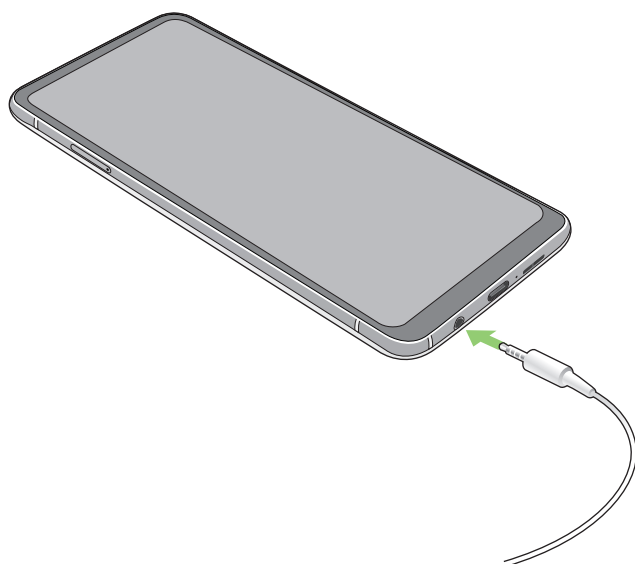
# 5

## Using a headset

Have the freedom to do other things while you're in a call or enjoy listening to your favorite music, using a headset.

### Connecting the audio jack

Insert the 3.5mm headset jack into the audio port of your device.



---

#### **WARNING!**

- Do not insert other objects into the audio jack port.
  - Do not insert a cable with electric power output into the audio jack port.
  - Listening at a high volume for long periods can damage your hearing.
- 

#### **NOTES:**

- We highly recommend to use only compatible headsets or the bundled headset with this device.
  - Unplugging the audio jack while listening to music, automatically pauses the music played.
  - Unplugging the audio jack while watching a video, automatically pauses the video playback.
-


## Google Play Music

With Google Play Music, you can stream your favorite music, create playlists, or listen to the radio. You can also store up to 50,000 music files to the cloud for free. You can also subscribe to Google Play Music for unlimited and ad-free access to millions of music files that you can add to your own music library.

### Setting up your Google Play Music

Sign in to your Google or Gmail account to be able to use Google Play Music. Once you've signed in to your account, all music files on your ASUS Phone, including the uploaded or purchased ones from Google Play, are added to your library.

To set up your Google Play Music:

1. From the Home screen, **Google > Play Music**.
2. Tap  then tap **Settings > Tap to choose account**.
3. Enter your account, then tap **ADD ACCOUNT**.
4. Follow the next instructions to sign in to your account.

---

#### NOTES:

- Google Play Music subscription is only available in some countries or region.
  - For more details on using Google Play Music, visit <https://support.google.com>.
-

# ***Your precious moments***

# **6**

## **Capture moments**

### **Launching the Camera app**

Capture images and record videos using your ASUS Phone's Camera app. Refer to any of the steps below to open the Camera app.

#### **From the lock screen**

Swipe  up to launch the camera app.

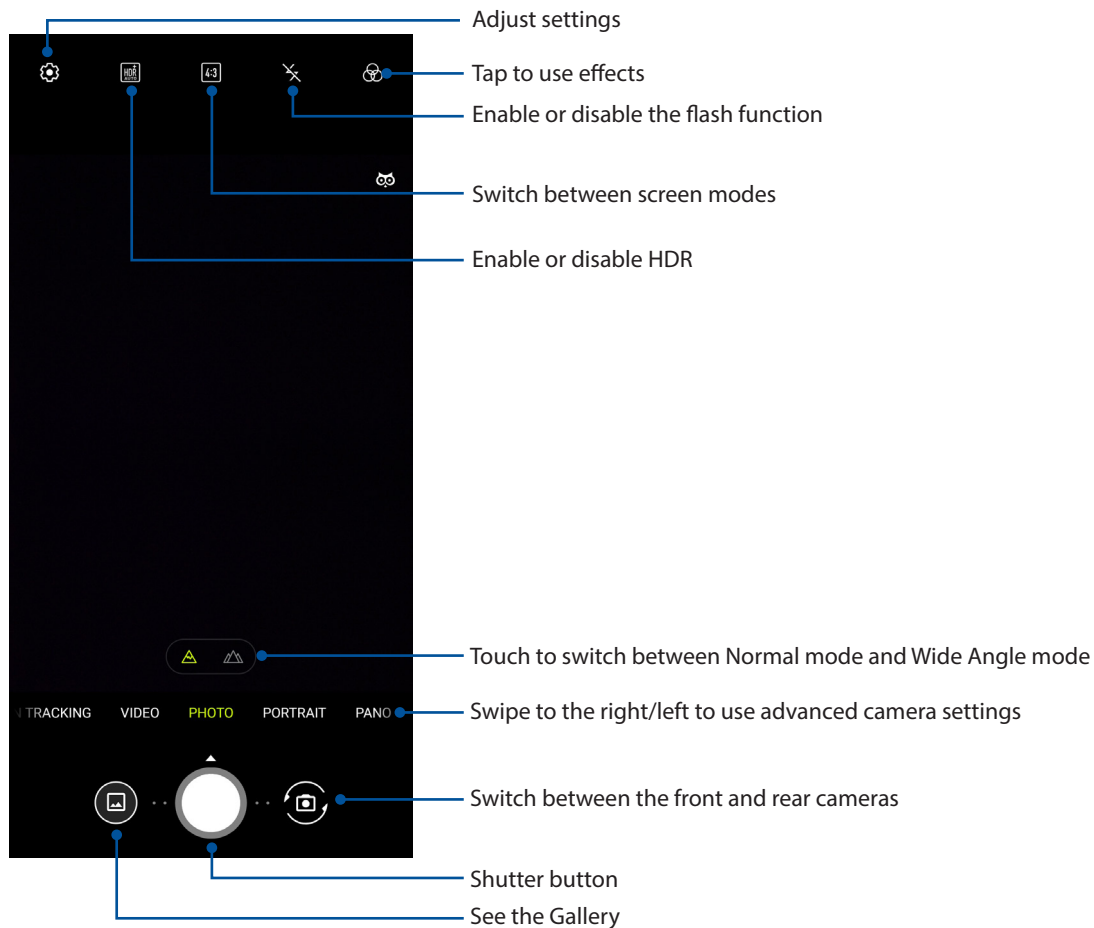
#### **From the home screen**

Tap  .

## Camera home screen


Your ASUS Phone's camera is equipped with auto-scene detection and auto-image stabilizer features. It also features a video stabilization function that helps prevent shakiness while video recording.

Tap the icons to start using your camera and explore the image and video features of your ASUS Phone.



## Photo Locations

To enable the location tagging feature, refer to the following steps:

1. Turn on the location access from **Settings > Security & location > Location > App-level permissions**.
2. Ensure that you have shared your location to Google Maps.
3. From the Camera app's home screen, tap  and activate **Location services** before you take the photo.

## Advanced camera features

Explore new ways of capturing images or videos and make captured extra special moments using the advanced camera features of your ASUS Phone.

---

**IMPORTANT!** Apply the settings first before taking images. Available features may vary per model.

---

### Time lapse

The time lapse video feature of your ASUS Phone allows you to capture stills for automatic time lapse playback. In effect, events seem to move in a fast-forward manner though they actually occurred and were recorded between long intervals.

#### Recording Time lapse videos

1. From the Camera app's home screen, swipe to the right to **Time lapse**.
2. Tap the shutter button then select the time lapse interval.
3. Tap the shutter button to start taking Time lapse videos.

### Slow motion

The slow motion video feature allows you to record videos for slow-motion playback.

#### Recording slow motion videos

1. From the Camera app's home screen, swipe to the right to **SLO-MO**.
2. Tap the shutter button to start taking Slow motion videos.

### Night

Take well-lit photos even on night time or on low-light situations using the Night feature of your ASUS Phone.

---

**NOTE:** Keep your hands steady while before and while the ASUS Phone is capturing the image to prevent blurry results.

---

#### Capturing Night photos

1. From the Camera app's home screen, swipe to the left to **Night**.
2. Tap the shutter button to start capturing Night photos.

## Panorama

Capture images from various angles using Panorama. Images captured from a wide angle perspective are automatically stitched together using this feature.

### Capturing panoramic photos

1. From the Camera app's home screen, swipe to the left to **PANO**.
2. Tap the shutter button then pan your ASUS Phone horizontally (to the left or right) or vertically (upward or downward) to capture the scenery.

---

**NOTE:** While panning your ASUS Phone, a timeline of thumbnails appears on the lower part of your screen as it captures the scenery.

---

3. Tap  when finished.

## Using the Gallery

View images and play videos on your ASUS Phone using the Gallery app.

This app also allows you to edit, share, or delete image and video files stored in your ASUS Phone. From Gallery, you can display images in a slideshow or tap to view the selected image or video file.

To launch Gallery, swipe up from the lower part of your Home screen and tap **Gallery**.

### Viewing the photo location

Enable the location access on your ASUS Phone, and get the location details on your photos. Your photos' location details include the area where the photos are taken, as well a map of the location via Google Map or Baidu (in China only).

To view the details of a photo:

1. Turn on the location access from **Settings > Security & lock screen > Location > App-level permissions**.
2. Ensure that you have shared your location to Google Map or Baidu.
3. Launch the Gallery app, and select the photo whose photo details you want to view.
4. Tap the photo then tap **Details**.



### Editing images

The Gallery also features its own image editing tools that you can use to enhance images saved on your ASUS Phone.



1. From the Gallery screen, tap the folder where the files are located.
2. After opening the folder, tap the image you want to edit.

3. Tap **Edit** to open the image editing toolbar.
4. Tap any of the icons on the editing toolbar to apply changes to the image.

## Sharing files from the Gallery

1. From the Gallery screen, tap the folder where the files you want to share are located.
2. After opening the folder, tap  > **Select** to activate file selection.
3. Tap the files you want to share. A check mark appears on top of the image you select.
4. Tap  then select from the list where you want to share the images.

## Deleting files from the Gallery

1. From the Gallery screen, tap the folder where the files you want to delete are located.
2. After opening the folder, tap  > **Select** to activate file selection.
3. Tap the files you want to delete. A check mark appears on top of the image you select.
4. Tap .


# ***Staying connected***

# 7

## **Mobile network**

When there's no available Wi-Fi network that you can connect to, you can enable your mobile network's data access for Internet connection.

### **Enabling the mobile network**

1. Do any of the following to launch the Settings screen:
  - Launch Quick Settings then tap .
  - Swipe up from the lower part of your Home screen then tap **Settings**.
2. Tap **Network & internet** > **Mobile network**.
3. Slide **Mobile data** to **ON**, and configure the other mobile network settings, if necessary.

---


#### **NOTES:**

- If you access the Internet via your mobile network, additional charges will be incurred depending on your data plan.
  - For more details on your mobile network charges/fees and settings, contact your mobile service provider.
- 

## **Wi-Fi**

The Wi-Fi technology of your ASUS Phone gets you connected to the wireless world. Update your social media accounts, browse the Internet, or exchange data and messages wirelessly from your ASUS Phone.

### **Enabling Wi-Fi**

1. Launch the Settings screen by doing any of the following:
  - Launch Quick Settings then tap  > **Network & internet**.
  - Swipe up from the lower part of your Home screen then tap **Settings** > **Network & internet**.
2. Slide the Wi-Fi switch to the right to turn on the Wi-Fi.

---

**NOTE:** You can also enable the Wi-Fi from Quick Settings screen. Refer to section [Quick Settings](#) on how to launch Quick Settings screen.

---



## Connecting to a Wi-Fi network

1. On the Settings screen, tap **Wi-Fi** to display all detected Wi-Fi networks.
2. Tap a network name to connect to it. For a secured network, you may be prompted to key in a password or other security credentials.


---

### NOTES:

- Your ASUS Phone automatically reconnects to the network that you connected with previously.
  - Turn off the Wi-Fi feature when you're not using it to help save battery power.
- 

## Disabling Wi-Fi

To disable Wi-Fi:

1. Launch the Settings screen by doing any of the following:
  - Launch Quick Settings then tap  > **Network & internet**.
  - Swipe up from the lower part of your Home screen then tap **Settings** > **Network & internet**.
2. Slide the Wi-Fi switch to the left to turn off the Wi-Fi.

---


**NOTE:** You can also disable the Wi-Fi from Quick Settings screen. See [Quick Settings](#) on how to launch Quick Settings screen.

---

## Bluetooth®

Use the Bluetooth feature of your ASUS Phone to send or receive files and stream multimedia files with other smart devices over short distances. With Bluetooth, you can share your media files with your friends' smart devices, send data for print with a Bluetooth printer, or play music files with a Bluetooth speaker.

## Enabling Bluetooth®

1. Do any of the following to launch the Settings screen:
  - Launch Quick Settings then tap  > **Connected devices**.
  - Swipe up from the lower part of your Home screen then tap **Settings** > **Connected devices**.
2. Slide the Bluetooth switch to the right to turn on the Bluetooth.

---

**NOTE:** You can also enable the Bluetooth from Quick Settings screen. See [Quick Settings](#) on how to launch Quick Settings screen.

---

## Pairing your ASUS Phone to a Bluetooth® device


Before using the Bluetooth feature of your ASUS Phone in full scale, you have to pair it first with the Bluetooth device. The ASUS Phone automatically stores the pairing connection of the Bluetooth device.

1. On the Settings screen, tap **Connected devices** > **Bluetooth** to display all available devices.

---

### IMPORTANT!

- If the device that you want to pair is not in the list, ensure to enable its Bluetooth feature and is discoverable.
  - See the user guide that came with your device to learn how to enable its Bluetooth and set it to discoverable.
- 


2. Tap  > **Refresh** to scan for more Bluetooth devices.
3. In the list of available devices, tap the Bluetooth device that you want to pair with.
4. Ensure that the same passkey show on both devices, then tap **Pair**.

---

**NOTE:** Turn off the Bluetooth feature when you're not using it to help save battery power.

---

## Unpairing your ASUS Phone from the Bluetooth® device

1. On the Settings screen, tap Bluetooth to display all available and paired devices.
2. In the list of paired devices, tap  of Bluetooth device that you want to unpair, then tap **Forget**.

## Tethering

When Wi-Fi service is not available, you can use your ASUS Phone as a modem or turn it into a Wi-Fi hotspot to get Internet access on your laptop, tablet, and other mobile devices.

---

**IMPORTANT!** Most mobile service providers may require a data plan for you to be able to use the tethering function. Contact your mobile service provider about availing of this data plan.

---


### NOTES:

- Internet access via tethering may be slower than the standard Wi-Fi or mobile connection.
  - Only a limited number of mobile devices can tether to your ASUS Phone for Internet access.
  - Turn off the tethering feature when you're not using it to help save battery power.
- 

## Wi-Fi Hotspot

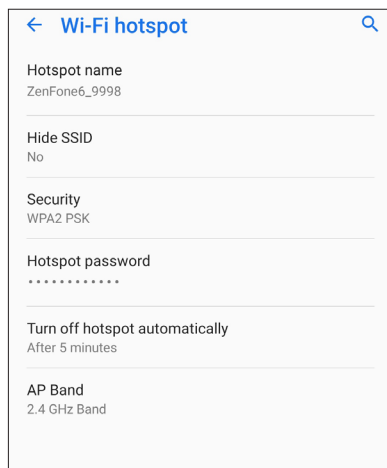
Turn your ASUS Phone into a Wi-Fi Hotspot to share Internet connection with other devices.

1. Do any of the following to launch the Settings screen:

- Launch Quick Settings then tap  > **Network & internet**.
- Swipe up from the lower part of your Home screen then tap **Settings** > **Network & internet**.

2. Tap **Hotspot & tethering** then slide **Wi-Fi hotspot** to **ON**.

3. Tap **Wi-Fi hotspot** then assign a unique SSID or network name and a strong 8-character password for your Wi-Fi hotspot. When done, tap **Save**.

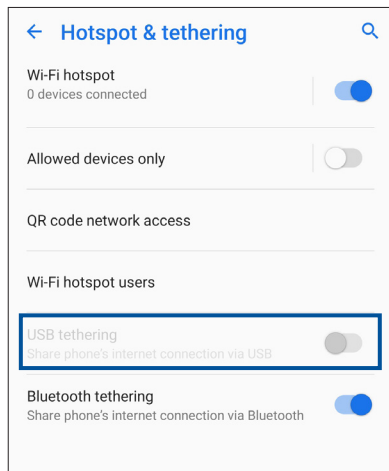


4. Connect other devices to your ASUS Phone's hotspot connection the same way you connect to a Wi-Fi network.

## USB Tethering

Enable USB tethering on your ASUS Phone and share its Internet connection with other devices.

1. Connect your ASUS Phone to another device with a USB cable.
2. From the Settings screen, tap **Network & internet** > **Hotspot & tethering**, then slide **USB tethering** to **ON** to enable tethering.



## Bluetooth Tethering

Enable Bluetooth tethering on your ASUS Phone to share its Internet connection with other devices.

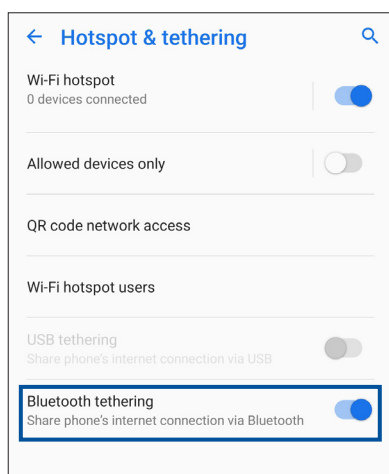
1. Enable Bluetooth on your ASUS Phone and the other device.
2. Pair both devices.

---

**NOTE:** For details, see [Pairing your ASUS Phone to a Bluetooth® device](#).

---

3. From the Settings screen, tap **Network & internet** > **Hotspot & tethering**, then slide **Bluetooth tethering** to **ON**.



# Travel and Maps

# 8

## Weather

Get real-time weather updates straight from your ASUS Phone using the weather app. Using Weather, you can also check other weather details from around the world.

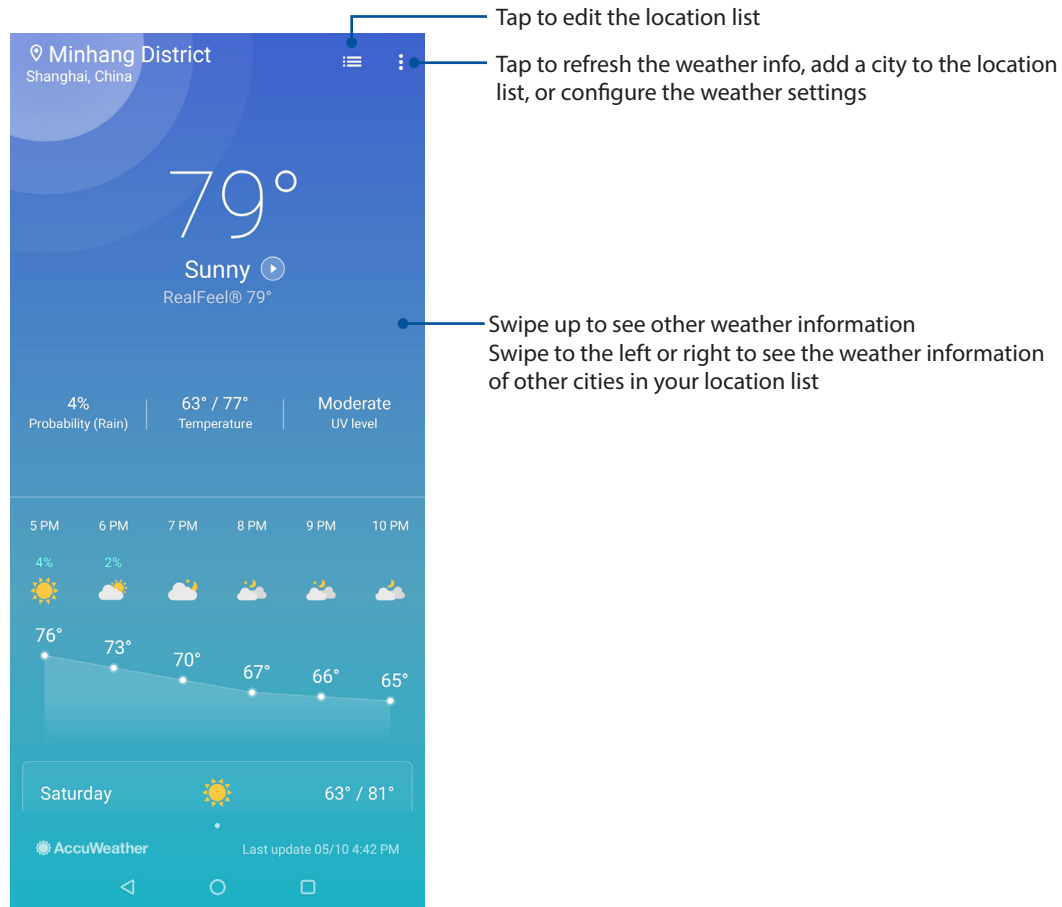
### Launching the Weather app

From your Home screen, tap the weather icon to launch the Weather app.



## Weather home screen

Set up and get your current location's weather updates as well as other parts of the world.



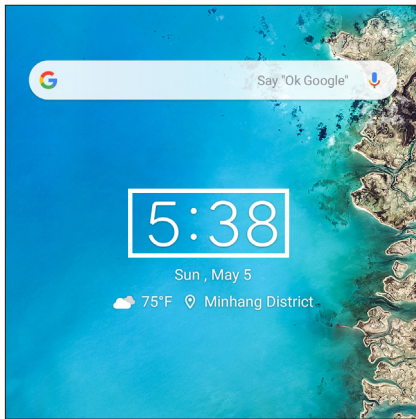
# Clock

Customize the time zone settings of your ASUS Phone, set alarms, and use your ASUS Phone as a stop watch using the Clock app.

## Launching Clock

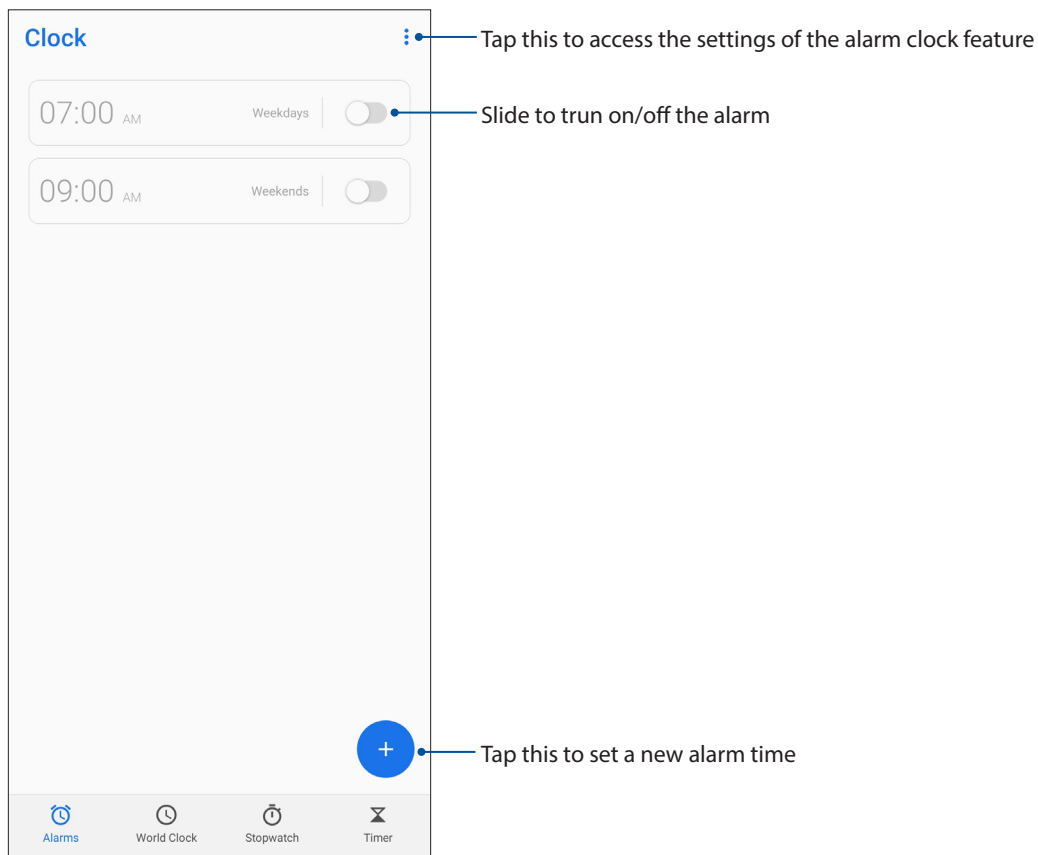
Launch the Clock app using either of the following options:

- Swipe up from the lower part of your Home screen then tap **Clock**.
- From your ASUS Phone's home screen, tap the digital clock display.



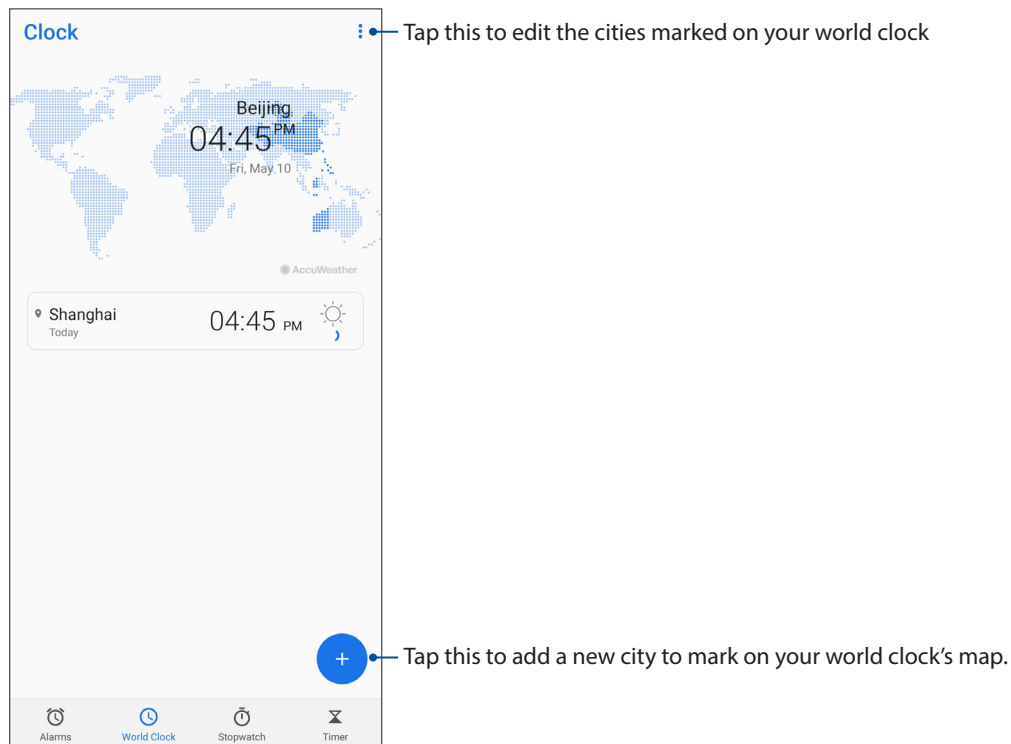
## Alarm clock

Tap **Alarms** to access the alarm clock settings of your ASUS Phone.



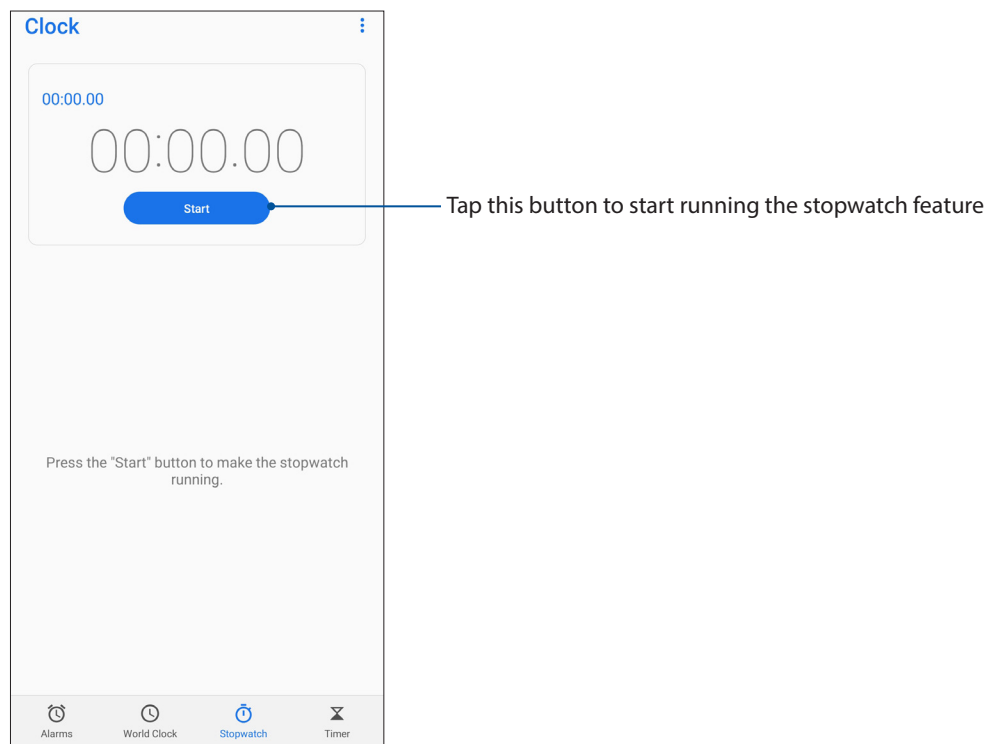
## World clock

Tap **World Clock** to access the world clock settings of your ASUS Phone.



## Stopwatch

Tap **Stopwatch** to use your ASUS Phone as a stopwatch.



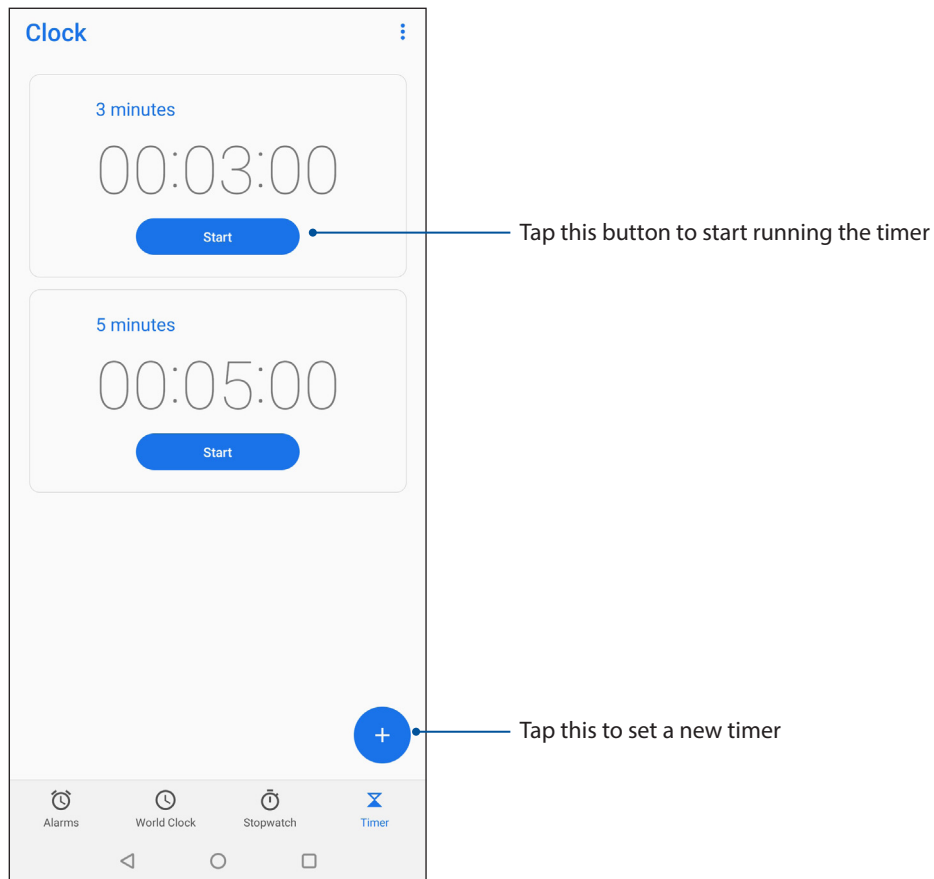


## Timer

You may set multiple timer options for your ASUS Phone. To do this, follow the steps below:

### Setting the timer

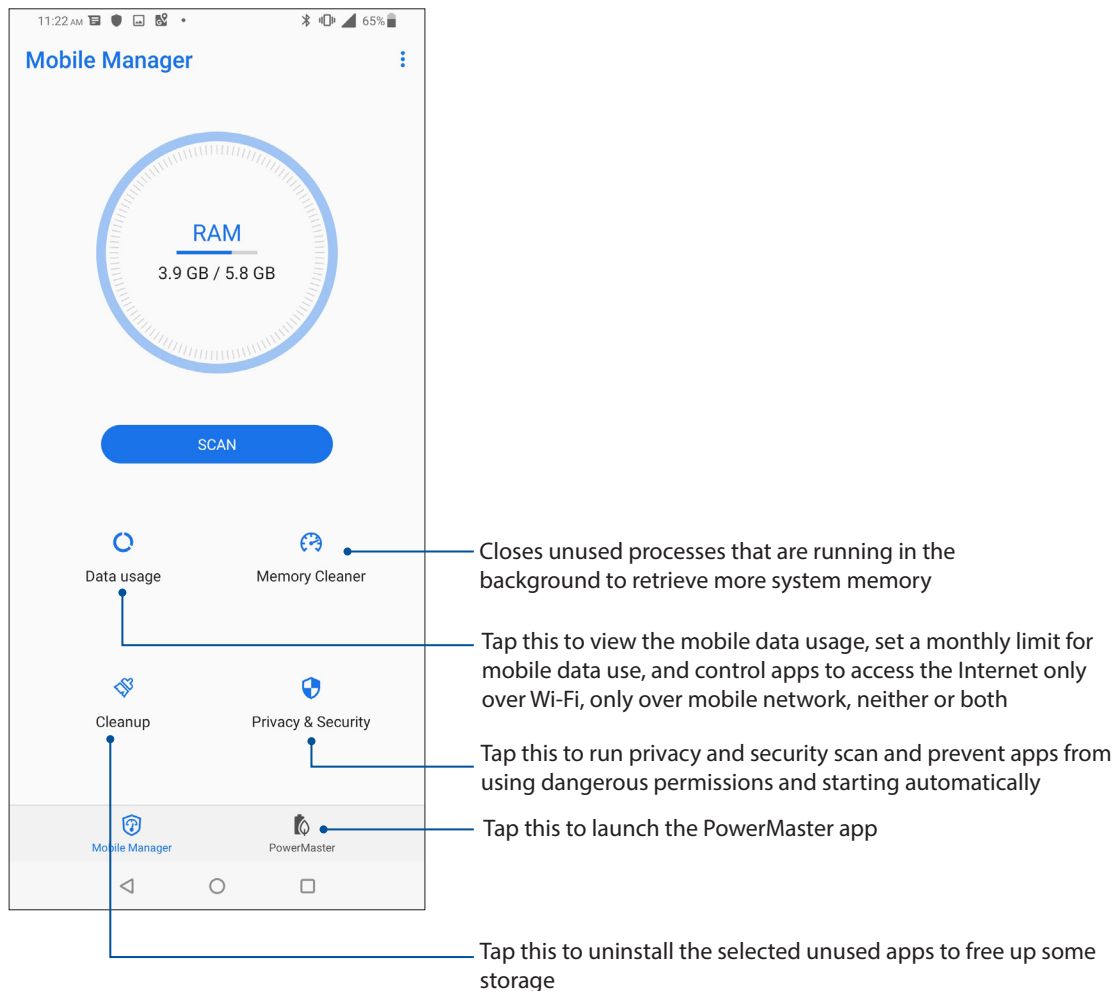
Tap **Timer** to access the timer feature of your ASUS Phone.



## Mobile Manager

Mobile Manager provides an integrated interface for several apps that are designed to optimize device performance, manage the phone power, and storage usage.

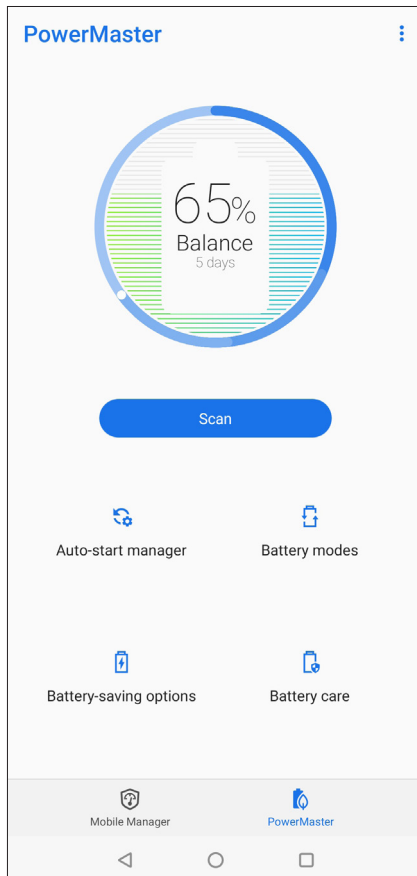
To launch Mobile Manager, swipe up from the lower part of your Home screen then tap **Settings** > **Advanced** > **Mobile Manager**.



## PowerMaster

With an intelligent suite of power management technologies, PowerMaster fully optimizes the performance of your device, and provides an integrated interface for power-related optimization features and settings.

To launch PowerMaster, swipe up from the lower part of your Home screen, tap **Settings** > **Advanced** > **Mobile Manager**, and then tap **PowerMaster**.



Tap on any of these functions:

- **Scan:** Scans for optimizations to save power.
- **Auto-start manager:** Allows you to launch Auto-start manager app.
- **Battery modes:** Allows you to select your battery modes and customize your power saving settings according to your needs.
- **Battery-saving options:** Allows you to disable some features or stop unnecessary apps to save power.
- **Battery care :** Dynamically adjusts the charging rate between 10:00 PM and 7:00 AM and extends the battery life of your ASUS phone by up to two times.

## Special Zen Tools

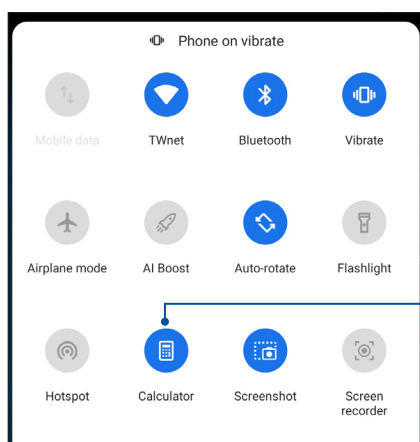
### Calculator

Calculate using your ASUS phone by enabling the Calculator app.

### Launching Calculator

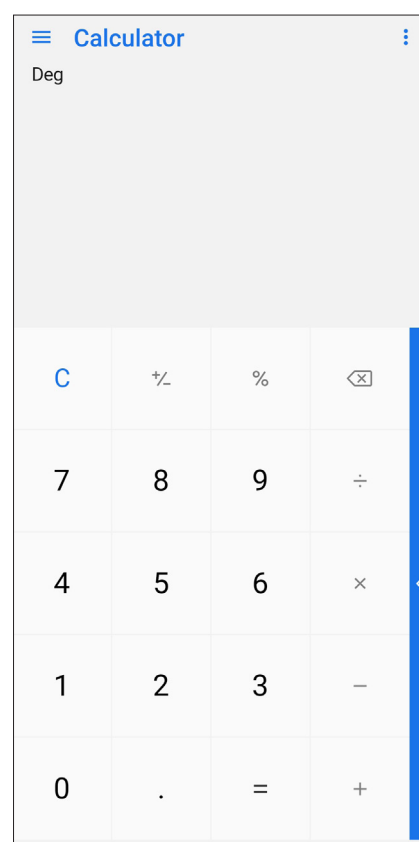
Launch Calculator using either of the following options:

- Swipe up from the lower part of your Home screen then tap **Calculator**.
- Open the Quick settings panel, the Calculator icon is there visibly on the list. Tap it to get started with your computations.



Tap this to enable the calculator

### Calculator screen

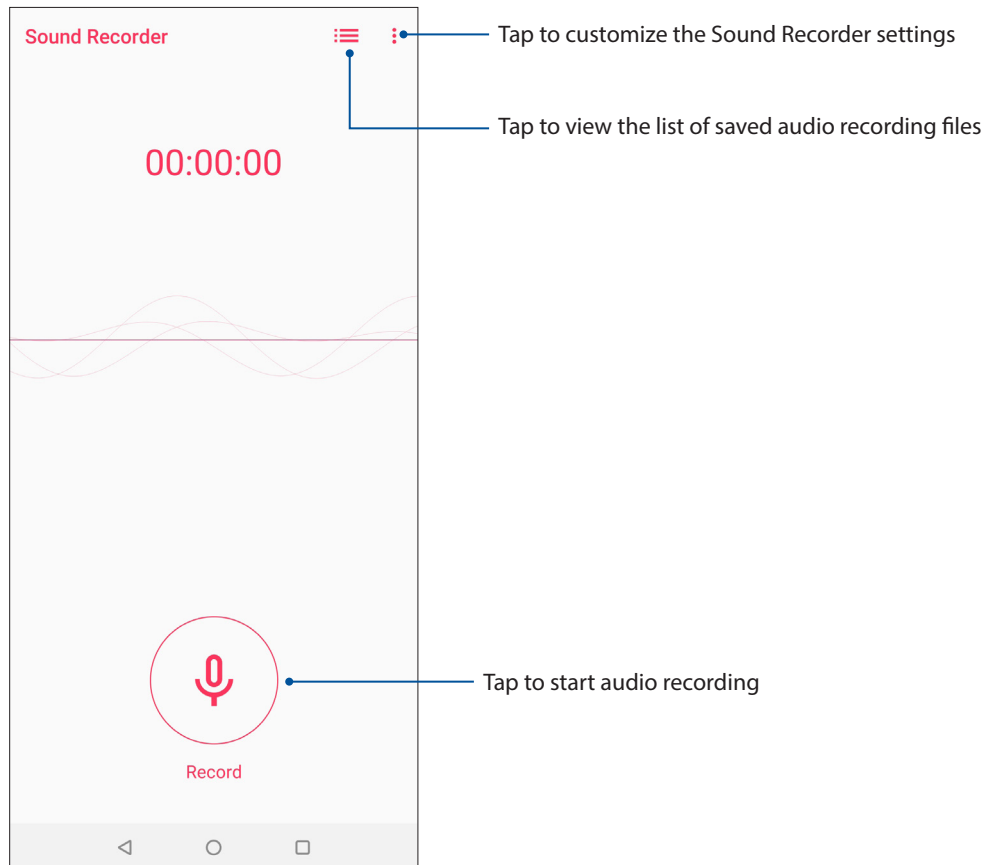


## Sound Recorder

Record audio files using your ASUS Phone by enabling the Sound Recorder app.

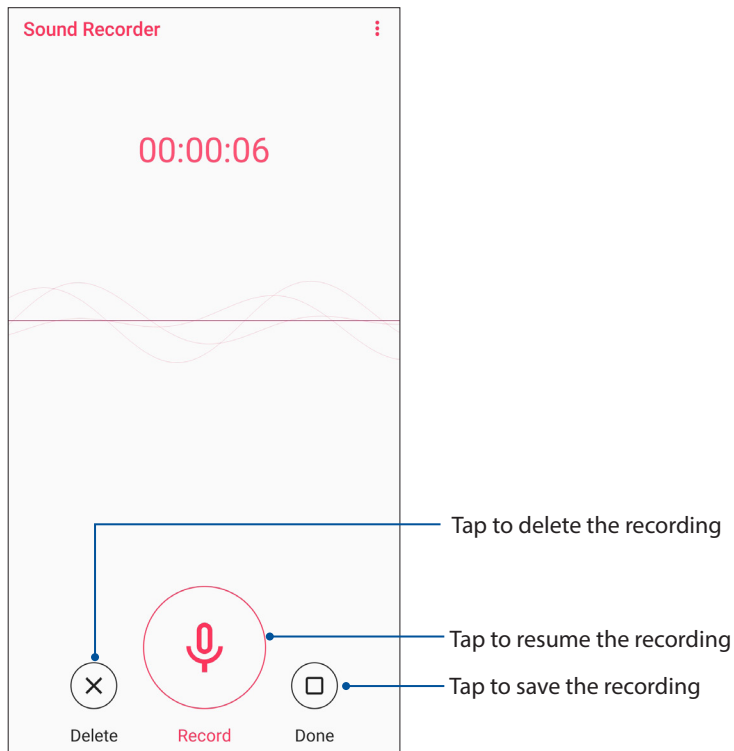
### Launching Sound Recorder

To launch Sound Recorder, swipe up from the lower part of your Home screen then tap **Sound Recorder**.



## Pausing a recording

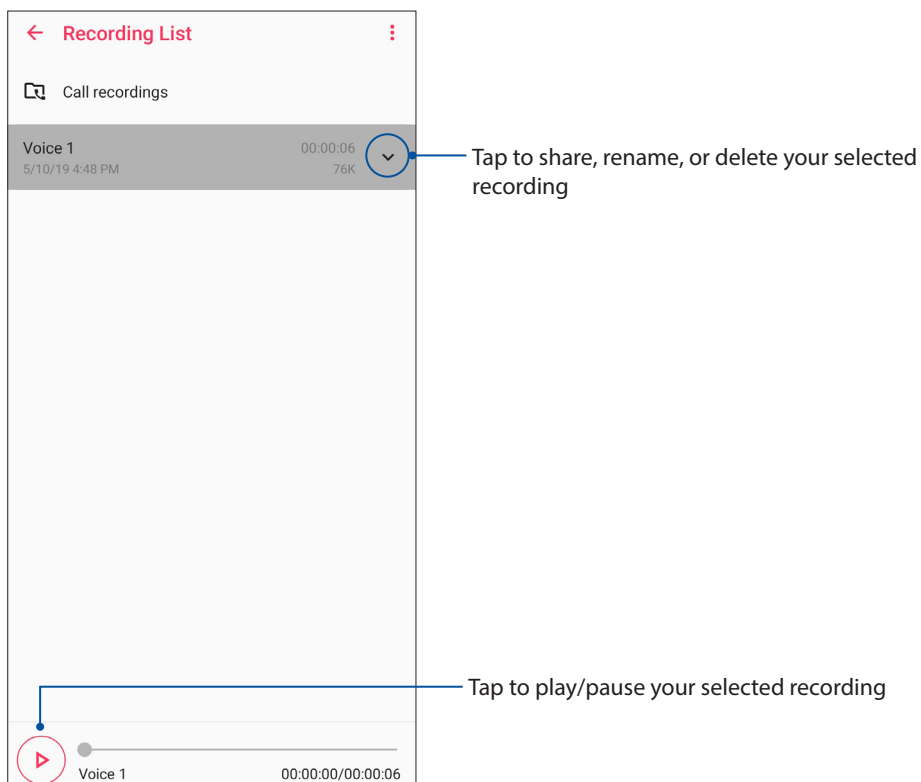
During a paused recording, you can choose to resume, delete, or save the recording.



## Recording List

From the Recording List, you can play, rename, share, or delete a saved audio recording file.


To view your recording list, tap  from the Sound Recorder main screen.



## Keeping your device up-to-date

Keep your ASUS Phone in the loop of Android system updates and upgraded apps and features.

### Updating your system

1. Swipe up from the lower part of your Home screen then tap **Settings**.
2. On the Settings screen, slide down to display other items then tap **System > System update** to check for system updates.
3. Tap  on the System updates screen to set up automatic download of system updates.

---

**NOTE:** You can preview the last time your ASUS Phone's system was updated at the Last update check: of the System update window.

---

### Storage

You can store data, apps, or files on your ASUS Phone (internal storage), on an external storage, or on an online storage. You need an internet connection to transfer or download your files on an online storage. Use the bundled USB cable to copy files to or from the computer to your ASUS Phone.

### Backup

Back up data, Wi-Fi passwords, and other settings to Google servers using your ASUS Phone.

1. Swipe up from the lower part of your Home screen then tap **Settings > System > Backup**.
2. From the Backup window, you can:
  - **Back up to Google Drive:** This feature backs up your data, Wi-Fi passwords, and other settings to Google Drive when enabled.
  - **Backup account:** Allows you to specify the account you to be associated when you save your backup.

### Reset

Reset network settings and app preferences, or reset factory defaults.

1. Swipe up from the lower part of your Home screen then tap **Settings > System > Reset options**.

2. From the Reset window, you can:

- **Reset Wi-Fi, mobile & Bluetooth:** This feature restores Wi-Fi passwords, and other network settings.
- **Reset app preferences:** This feature facilitates restoration of backed up settings and data when you reinstall an app.
- **Erase all data (factory reset):** Erases all data on phone.

## Securing your ASUS Phone

Use the security features of your ASUS Phone to prevent unauthorized calls or access of information.

### Unlocking your screen

When the screen is locked, you can open it with the security unlocking options that the ASUS Phone offers you.

1. Swipe up from the lower part of your Home screen then tap **Settings > Security & lock screen**.
2. Tap **Screen lock** then select an option to unlock your ASUS Phone.

---

#### NOTES:

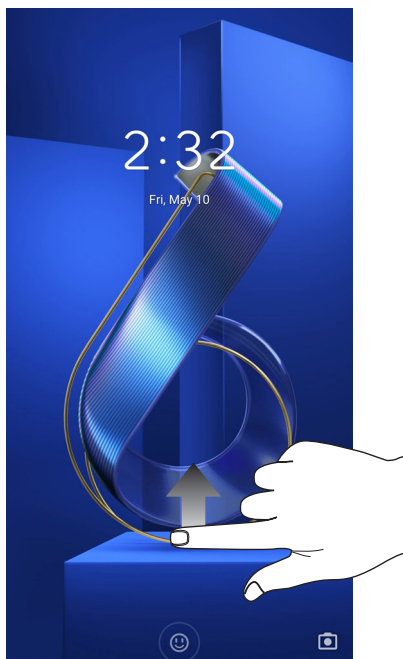
- Refer to section **Unlock screen options** for more information.
  - To deactivate the unlock screen option that you set, tap **None** on Choose screen lock screen.
- 

### Unlock screen options

Choose from these options to lock your ASUS Phone.

#### Swipe

Swipe up to unlock your ASUS Phone.





## PIN

Key in at least four numbers to set a PIN.

The screenshot shows the 'Set screen lock' screen. At the top, there is a back arrow and the text 'Set screen lock'. Below this, a message states 'PIN must be at least 4 digits' above a horizontal line for input. At the bottom, there are 'Cancel' and 'Next' buttons. Below these is a numeric keypad with digits 1-9 and 0, each with its corresponding letters (e.g., 1, 2 ABC, 3 DEF). There is also a backspace icon and a blue arrow icon.

---

**IMPORTANT!** Ensure to remember the PIN that you created to unlock your device.

---

## Pattern

Slide your finger on the dots and create a pattern.

This screenshot is identical to the one above, showing the 'Set screen lock' screen with the PIN setup interface, including the back arrow, title, instruction, input line, and numeric keypad.

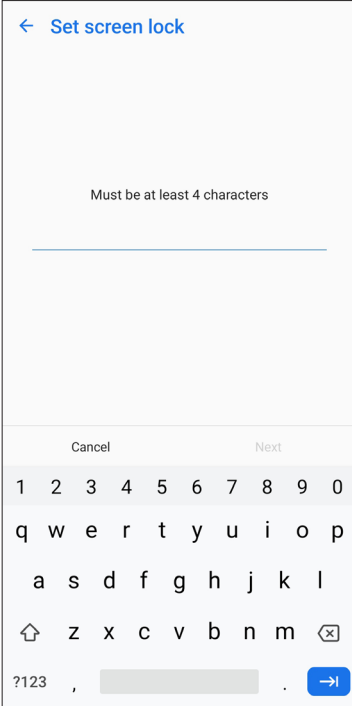
---

**IMPORTANT!** You can create a pattern with a minimum of four dots. Ensure to remember the pattern that you created to unlock your device.

---

## Password

Key in at least four characters to create a password.



---

**IMPORTANT!** Ensure to remember the password that you created to unlock your device.

---

## Setting your ASUS Phone identity

Know your ASUS Phone's identity such as serial number, IMEI (International Mobile Equipment Identity) number, or model number.

This is important, as when you may lose your ASUS Phone, you can contact your mobile carrier and provide the information to blacklist the unauthorized use of your ASUS Phone.

To display your ASUS Phone's identity:

1. Swipe up from the lower part of your Home screen then tap **Settings**.
2. On the Settings screen, slide down to display other items then tap **System > About phone**. The About screen displays the status, legal information, model number, operating system version, hardware, and software information of your ASUS Phone.
3. To see the serial number, SIM contact number, and IMEI of your ASUS Phone, tap **Status**.

# Appendix

## Safety information

---

**CAUTION!** Use of controls or adjustments or performance of procedures other than those specified herein may result in hazardous radiation exposure.

---

### ASUS Phone care

- Use your ASUS Phone in an environment with ambient temperatures between 0 °C (32 °F) and 35 °C (95 °F).

### The battery

---

**WARNING:** Disassembling the battery by yourself will void its warranty and may cause serious harm.

---

Your ASUS Phone is equipped with a high performance non-detachable Li-polymer battery. Observe the maintenance guidelines for a longer battery life.

- Do not remove the non-detachable Li-polymer battery as this will void the warranty.
- Avoid charging in extremely high or low temperature. The battery performs optimally in an ambient temperature of +5 °C to +35 °C.
- Do not remove and replace the battery with a non-approved battery.
- Use only ASUS battery. Using a different battery may cause physical harm/injury and may damage your device.
- Do not remove and soak the battery in water or any other liquid.
- Never try to open the battery as it contains substances that might be harmful if swallowed or allowed to come into contact with unprotected skin.
- Do not remove and short-circuit the battery, as it may overheat and cause a fire. Keep it away from jewelry or metal objects.
- Do not remove and dispose of the battery in fire. It could explode and release harmful substances into the environment.
- Do not remove and dispose of the battery with your regular household waste. Take it to a hazardous material collection point.
- Do not touch the battery terminals.

- To avoid fire or burns, do not disassemble, bend, crush, or puncture the battery.

---

**NOTES:**

- Risk of explosion if battery is replaced by an incorrect type.
  - Dispose of used battery according to the instructions.
- 

## **The charger**

- Use only the charger supplied with your ASUS Phone.
- Never pull the charger cord to disconnect it from the power socket. Pull the charger itself.

## **Caution**

Your ASUS Phone is a high quality piece of equipment. Before operating, read all instructions and cautionary markings on the (1) AC Adapter.

- Do not use the ASUS Phone in an extreme environment where high temperature or high humidity exists. The ASUS Phone performs optimally in an ambient temperature between 0 °C (32 °F) and 35 °C (95 °F).
- Do not disassemble the ASUS Phone or its accessories. If service or repair is required, return the unit to an authorized service center. If the unit is disassembled, a risk of electric shock or fire may result.
- Do not short-circuit the battery terminals with metal items.

## **Operator access with a tool**

If a TOOL is necessary to gain access to an OPERATOR ACCESS AREA, either all other compartments within that area containing a hazard shall be inaccessible to the OPERATOR by the use of the same TOOL, or such compartments shall be marked to discourage OPERATOR access.

## Notices

### Federal Communications Commission Statement

This device complies with part 15 of the FCC Rules. Operation is subject to the following two conditions: (1) This device may not cause harmful interference, and (2) this device must accept any interference received, including interference that may cause undesired operation.

Changes or modifications not expressly approved by the party responsible for compliance could void the user's authority to operate the equipment.

This equipment has been tested and found to comply with the limits for a Class B digital device, pursuant to part 15 of the FCC Rules. These limits are designed to provide reasonable protection against harmful interference in a residential installation. This equipment generates, uses and can radiate radio frequency energy and, if not installed and used in accordance with the instructions, may cause harmful interference to radio communications. However, there is no guarantee that interference will not occur in a particular installation. If this equipment does cause harmful interference to radio or television reception, which can be determined by turning the equipment off and on, the user is encouraged to try to correct the interference by one or more of the following measures:

- Reorient or relocate the receiving antenna.
- Increase the separation between the equipment and receiver.
- Connect the equipment into an outlet on a circuit different from that to which the receiver is connected.
- Consult the dealer or an experienced radio/TV technician for help.

The antenna(s) used for this transmitter must not be co-located or operated in conjunction with any other antenna or transmitter.

The country code selection is for non-US models only and is not available to all US models. Per FCC regulation, all WiFi products that are marketed in US must be fixed to US-operated channels only.

The responsible party within the USA per 47 CFR Part 2.1077(a)(3):

#### **ASUS COMPUTER INTERNATIONAL (America)**

Address: Corporate Way, Fremont, CA 94539, USA

Telephone: +1-510-739-3777

### RF Exposure Information (SAR)

This device has been tested and meets applicable limits for Radio Frequency (RF) exposure.

Specific Absorption Rate (SAR) refers to the rate at which the body absorbs RF energy. SAR limits are 1.6 Watts per kilogram (over a volume containing a mass of 1 gram of tissue) in countries that follow the United States FCC limit and 2.0 W/kg (averaged over 10 grams of tissue) in countries that follow the Council of the European Union limit. Tests for SAR are conducted using standard operating positions with the device transmitting at its highest certified power level in all tested frequency bands.

To reduce exposure to RF energy, use a hands-free accessory or other similar option to keep this device away from your head and body. Carry this device at least 10 mm away from your body to ensure exposure levels remain at or below the as-tested levels. Choose the belt clips, holsters, or other similar body-worn accessories which do not contain metallic components to support operation in this manner. Cases with metal parts may change the RF performance of the device, including its compliance with RF exposure guidelines, in a manner that has not been tested or certified, and use such accessories should be avoided.

The highest FCC SAR values for the device (ASUS\_I01WDX) are as follows:

- 1.13 W/Kg @1g (Head)
- 0.91 W/Kg @1g (Body)
- 1.13 W/Kg @10g (Hotspot)

The FCC has granted an Equipment Authorization for this device (ASUS\_I01WDX) with all reported SAR levels evaluated as in compliance with the FCC RF exposure guidelines. SAR information on this device is on file with the FCC and can be found under the Display Grant section of [www.fcc.gov/oet/ea/fccid](http://www.fcc.gov/oet/ea/fccid) after searching on FCC ID: MSQI01WDX.

## FCC Statement (HAC)

This phone has been tested and rated for use with hearing aids for some of the wireless technologies that it uses. However, there may be some newer wireless technologies used in this phone that have not been tested yet for use with hearing aids. It is important to try the different features of this phone thoroughly and in different locations, using your hearing aid or cochlear implant, to determine if you hear any interfering noise. Consult your service provider or the manufacturer of this phone for information on hearing aid compatibility. If you have questions about return or exchange policies, consult your service provider or phone retailer.

The Federal Communications Commission has implemented rules and a rating system designed to enable people who wear hearing aids to more effectively use these wireless telecommunications devices. The standard for compatibility of digital wireless phones with hearing aids is set forth in American National Standard Institute (ANSI) standard C63.19-2011. There are two sets of ANSI standards with ratings from one to four (four being the best rating): an "M" rating for reduced interference making it easier to hear conversations

on the phone when using the hearing aid microphone, and a "T" rating that enables the phone to be used with hearing aids operating in the telecoil mode thus reducing unwanted background noise.

The Hearing Aid Compatibility rating is displayed on the wireless phone box.

A phone is considered Hearing Aid Compatible for acoustic coupling (microphone mode) if it has an "M3" or "M4" rating. A digital wireless phone is considered Hearing Aid Compatible for inductive coupling (telecoil mode) if it has a "T3" or "T4" rating.

The tested M-Rating and T-Rating for this device (ASUS\_I01WDX) are M4 and T4.

You'll want to try a number of wireless phones so that you can decide which works the best with your hearing aids. You may also want to talk with your hearing aid professional about the extent to which your hearing aids are immune to interference, if they have wireless phone shielding, and whether your hearing aid has a HAC rating.

## Canada, Industry Canada (IC) Notices

This device complies with Industry Canada's licence-exempt RSS standard(s). Operation is subject to the following two conditions:

- (1) This device may not cause interference; and
- (2) This device must accept any interference, including interference that may cause undesired operation of the device.

Le présent appareil est conforme aux normes CNR d'Industrie Canada applicables aux appareils radio exempts de licence. Son utilisation est sujette aux deux conditions suivantes :

- (1) Cet appareil ne doit pas créer d'interférences nuisibles, et
- (2) Cet appareil doit tolérer tout type d'interférences, y compris celles susceptibles de provoquer un fonctionnement non souhaité de l'appareil.

### Radio Frequency (RF) Exposure Information

The radiated output power of the Wireless Device is below the Industry Canada (IC) radio frequency exposure limits. The Wireless Device should be used in such a manner such that the potential for human contact during normal operation is minimized. This device (ASUS\_I01WDX) has been evaluated for and shown compliant with the IC Specific Absorption Rate ("SAR") limits when installed in specific host products operated in portable exposure conditions.

Canada's REL (Radio Equipment List) can be found at the following web address: <http://www.ic.gc.ca/app/sitt/reltel/srch/nwRdSrch.do?lang=eng>.

Additional Canadian information on RF exposure also can be found at the following web address: <http://www.ic.gc.ca/eic/site/smt-gst.nsf/eng/sf08792.html>.

This equipment should be installed and operated with minimum distance 1.0 cm between the radiator and your body.

Cet appareil doit être installé et utilisé avec une distance minimale de 1.0 cm entre l'émetteur et votre corps.

### Informations concernant l'exposition aux fréquences radio (RF)

La puissance de sortie émise par cet appareil sans fil est inférieure à la limite d'exposition aux fréquences radio d'Industrie Canada (IC). Utilisez l'appareil sans fil de façon à minimiser les contacts humains lors d'un fonctionnement normal.

Cet appareil été évalué et démontré conforme aux limites de DAS (Débit d'absorption spécifique) d'IC lorsqu'il est installé dans des produits hôtes particuliers qui fonctionnent dans des conditions d'exposition à des appareils portables.

Ce périphérique est homologué pour l'utilisation au Canada. Pour consulter l'entrée correspondant à l'appareil dans la liste d'équipement radio (REL - Radio Equipment List) d'Industrie Canada rendez-vous sur :

<http://www.ic.gc.ca/app/sitt/reltel/srch/nwRdSrch.do?lang=eng>.

Pour des informations supplémentaires concernant l'exposition aux ondes radio au Canada, rendez-vous sur :

<http://www.ic.gc.ca/eic/site/smt-gst.nsf/eng/sf08792.html>.

### **CAN ICES-3(B)/NMB-3(B)**

This Class B digital apparatus complies with Canadian ICES-003.

Cet appareil numérique de la classe B est conforme à la norme NMB-003 du Canada.

This device and its antenna(s) must not be co-located or operated in conjunction with any other antenna or transmitter, except tested built-in radios.

The County Code Selection feature is disabled for products that are marketed in the US/ Canada.

Cet appareil et son ou ses antenne(s) ne doivent pas être situés près de ou utilisés conjointement avec une autre antenne ou un autre émetteur, exception faite des radios intégrées qui ont été testées.

La fonction de sélection de l'indicatif du pays est désactivée pour les produits commercialisés aux États-Unis et au Canada.

The IC ID for this device (ASUS\_I01WDX) is 3568A-I01WDX.

L'identifiant Industrie Canada de cet appareil (ASUS\_I01WDX) est: 3568A-I01WDX.



## EU Radio Equipment Directive Compliance

### Simplified EU Declaration of Conformity

Hereby, ASUSTek Computer Inc. declares that the radio equipment ASUS\_I01WD is in compliance with Directive 2014/53/EU. Full text of EU declaration of conformity is available at <https://www.asus.com/support/>. (Search for ZS630KL)

#### RF Output Table [WW SKU (RF Band)]

Items	Maximum Radio-Frequency Output Power Table	
Bluetooth	BR/EDR (2402~2480 MHz)	12dBm
	BT LE 4.0 (2402~2480 MHz)	10dBm
	BT LE 5.0 (2402~2480 MHz)	10dBm
WLAN 2.4GHz	802.11b (2412~2472 MHz)	19dBm
	802.11g (2412~2472 MHz)	19dBm
	802.11n HT20 (2412~2472 MHz)	18dBm
WLAN 5GHz Band I	802.11a (5150-5250MHz)	17.5dBm
	802.11n HT20 (5150-5250MHz)	17.5dBm
	802.11n HT40 (5150-5250MHz)	17.5dBm
	802.11ac HT80 (5150-5250MHz)	16.5dBm
WLAN 5GHz Band II	802.11a (5250-5350MHz)	17.5dBm
	802.11n HT20 (5250-5350MHz)	17.5dBm
	802.11n HT40 (5250-5350MHz)	17.5dBm
	802.11ac HT80 (5250-5350MHz)	16.5dBm
WLAN 5GHz Band III	802.11a (5470-5725MHz)	18dBm
	802.11n HT20 (5470-5725MHz)	17.5dBm
	802.11n HT40 (5470-5725MHz)	18dBm
	802.11ac HT80 (5470-5725MHz)	16.5dBm
WLAN 5GHz Band IV	802.11a (5725-5850MHz)	14dBm
	802.11n HT20 (5725-5850MHz)	14dBm
	802.11n HT40 (5725-5850MHz)	14dBm
	802.11ac HT80 (5725-5850MHz)	14dBm
NFC	13.56MHz	-20.4 dBuA/m
GSM	GSM900 Burst (880~915; 925~960 MHz)	33dBm
	GSM850 Burst	33dBm
	GSM1800 Burst (1710~1785 ; 1805~1880 MHz)	30dBm
	GSM1900 Burst	30dBm
WCDMA	Band1/2/5/8	24dBm
FDD-LTE	Band1/2/3/5/7/8/20/28	23dBm
TDD-LTE	Band 38/40/41	23dBm

## RF Output Table [TW SKU (RF Band)]

Items	Maximum Radio-Frequency Output Power Table	
Bluetooth	BR/EDR (2402~2480 MHz)	11dBm
	BT LE 4.0 (2402~2480 MHz)	10dBm
	BT LE 5.0 (2402~2480 MHz)	10dBm
WLAN 2.4GHz	802.11b (2412~2472 MHz)	18dBm
	802.11g (2412~2472 MHz)	18dBm
	802.11n HT20 (2412~2472 MHz)	18dBm
WLAN 5GHz Band I	802.11a (5150-5250MHz)	18dBm
	802.11n HT20 (5150-5250MHz)	18dBm
	802.11n HT40 (5150-5250MHz)	18dBm
	802.11ac HT80 (5150-5250MHz)	18dBm
WLAN 5GHz Band II	802.11a (5250-5350MHz)	18dBm
	802.11n HT20 (5250-5350MHz)	18dBm
	802.11n HT40 (5250-5350MHz)	18dBm
	802.11ac HT80 (5250-5350MHz)	18dBm
WLAN 5GHz Band III	802.11a (5470-5725MHz)	18dBm
	802.11n HT20 (5470-5725MHz)	18dBm
	802.11n HT40 (5470-5725MHz)	18dBm
	802.11ac HT80 (5470-5725MHz)	18dBm
WLAN 5GHz Band IV	802.11a (5725-5850MHz)	18dBm
	802.11n HT20 (5725-5850MHz)	18dBm
	802.11n HT40 (5725-5850MHz)	18dBm
	802.11ac HT80 (5725-5850MHz)	18dBm
NFC	13.56MHz	-20.4 dBuA/m
GSM	GSM900 Burst (880~915; 925~960 MHz)	33dBm
	GSM850 Burst	33dBm
	GSM1800 Burst (1710~1785 ; 1805~1880 MHz)	30dBm
	GSM1900 Burst	30dBm
WCDMA	Band1/2/5/6/8/19	23dBm
FDD-LTE	Band1/2/3/4/5/7/8/18/19/26/28	22.5dBm
TDD-LTE	Band 38/39/41 (2535~2655MHz)	22.5dBm

**NOTE:** This RF output power table is for EU member states, the EEA States, the EFTA States and Turkey only. The frequency range and the RF output power may differ from other non-EU countries.

The Wi-Fi operating in the band 5150-5350MHz shall be restricted to indoor use for countries listed in the table below:

AT	BE	BG	CZ	DK	EE	FR
DE	IS	IE	IT	EL	ES	CY
LV	LI	LT	LU	HU	MT	NL
NO	PL	PT	RO	SI	SK	TR
FI	SE	CH	UK	HR		

## RF Exposure Information

This ASUS product has been tested and meets applicable European SAR limits. The SAR limit is 2.0 W/kg in countries that set the limit averaged over 10 grams of tissue. The specific maximum SAR values for this device are as follows:

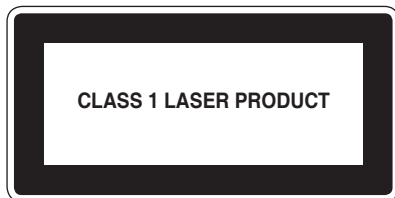
- Head: 1.57 W/Kg @10g
- Body: 0.98 W/Kg @10g

When carrying this device or using it while worn on the body, either use an approved accessory such as a holster or otherwise maintain a distance of 5 mm from the body to ensure compliance with RF exposure requirements.

## CE Marking



## Laser safety information



Complies with 21 CFR 1040.10 and 1040.11 except for deviations pursuant to Laser Notice No. 50, dated June 24, 2007

## Using GPS (Global Positioning System) on your ASUS Phone

To use the GPS positioning feature on your ASUS Phone:

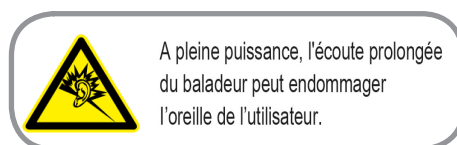
Ensure that your device is connected to the Internet before using Google Map or any GPS-enabled apps.

For first-time use of a GPS-enabled app on your device, ensure that you are outdoors to get the best positioning data.

When using a GPS-enabled app on your device inside a vehicle, the metallic component of the car window and other electronic devices might affect the GPS performance.

## Prevention of Hearing Loss

To prevent possible hearing damage, do not listen at high volume levels for long periods.



For France, headphones/earphones for this device are compliant with the sound pressure level requirement laid down in the applicable EN 50332-1:2013 and/or EN50332-2:2013 standard required by French Article L.5232-1.

## General Usage (typical body-worn) (for Japan)

This device ( front & rear side) should be operated under a separation distance of 15 mm from the human body.

\* The other four sides are not in close proximity to the human body at the general use as described above.

## India E-waste (Management and handling) Rules 2016

This product complies with the "India E-Waste (Management) Rules, 2016" and prohibits use of lead, mercury, hexavalent chromium, polybrominated biphenyls (PBBs) and polybrominated diphenyl ethers (PBDEs) in concentrations exceeding 0.1% by weight in homogenous materials and 0.01 % by weight in homogenous materials for cadmium, except for the exemptions listed in Schedule II of the Rule.

## India BIS - IS 16333 Notice

Language Input : Hindi, English, Tamil

Readability: Assamese, Bangla, Bodo(Boro), Dogri, Gujarati, Hindi, Kannada, Kashmiri, Konkani, Maithili, Malayalam, Manipuri(Bangla), Manipuri(Meetei Mayek), Marathi, Nepali, Oriya, Panjabi, Santhali, Sanskrit, Sindhi (Devanagari) ,Tamil, Telugu, Urdu and English

## Coating notice

---

**IMPORTANT!** To provide electrical insulation and maintain electrical safety, a coating is applied to insulate the device except on the areas where the I/O ports are located.

---

## Green ASUS notice

ASUS is devoted to creating environment-friendly products and packaging to safeguard consumers' health while minimizing the impact on the environment. The reduction of the number of the manual pages complies with the reduction of carbon emission.

For the detailed user manual and related information, refer to the user manual included in the ASUS Tablet or visit the ASUS Support Site at <http://support.asus.com/>.

## ASUS Recycling/Takeback Services

ASUS recycling and takeback programs come from our commitment to the highest standards for protecting our environment. We believe in providing solutions for you to be able to responsibly recycle our products, batteries, other components as well as the packaging materials. Please go to <http://csr.asus.com/english/Takeback.htm> for detailed recycling information in different regions.

Model name: ASUS_I01WD (ZS630KL)
----------------------------------

<b>Manufacturer:</b>	ASUSTeK Computer Inc.
<b>Address:</b>	4F, No.150, LI-TE RD., PEITOU, TAIPEI 112, TAIWAN
<b>Authorised representative in Europe:</b>	ASUS Computer GmbH
<b>Address:</b>	HARKORT STR. 21-23, 40880 RATINGEN, GERMANY

# Index

## A

Advanced camera features 53

ASUS Phone 8

- charging 11
- microSD 9
- nano SIM card 9
- parts and features 8
- turning on/off 13

## B

Backup and reset 71

Beauty

- see also Advanced camera features 53

Block list 47

- blocking 47
- unblocking 47

Bluetooth 57

- enabling 57
- pairing 58
- unpairing 58

## C

Calculator 68

Call logs 41

- redial your last-called number 42
- saving calls to Contacts 41

Calls 39

- answering 41
- calling from Contacts 40
- calling your favorite contacts 41
- dialing a phone number 39
- launching the Phone app 39
- other call options 42
- receiving 41
- see also Contacts 44
- see Call logs 41
- see Extension number 39
- see Smart Dialing 40

Camera 51

- camera home screen 52
- launching 51
- see Advanced camera features 53

Chrome 30

- bookmarking pages 31
- clearing the browser data 31
- launching 30
- sharing pages 31

Clock 63

- alarm clock 63

- launching 63
- stopwatch 64
- timer 65
- world clock 64

Contacts 44

- adding 45
- adding an extension number 45
- contacts settings 44
- customizing your contact's profile 46
- see also Social networking 47
- setting up your profile 44

## D

Data Transfer 36

Date and time 23

- setting up 23

Dual SIM feature 37

- assigning 38
- renaming 37
- SIM card for data service 38
- SIM card for voice calls 38

## E

Extension number 39

- auto dialing 40
- confirmation prompt 39
- dialing 39

## F

Face Unlock 27

Favorite contacts 41

- calling 41
- marking 46

File Manager 35

- accessing the internal storage 35

Fingerprint 25

- setting up fingerprint ID from Settings 26
- starting your ASUS phone for the first time 25
- locate finger print scanner 25
- protect your phone 25

## G

Gallery 54

- deleting files 55
- editing images 54
- sharing files 55
- viewing the photo location 54

Gmail 32

Google Calendar 33

- creating events 33
- creating reminders 34

- editing or removing events 33
  - editing or removing reminders 34
- Google Play Music 50
- setting up your Google Play Music 50

## H

- Headset 49
- connecting 49
- Home screen 18
- personalizing 21
  - see also Wallpapers 22

## L

- Lock screen 24
- customizing 24
  - see also Securing your ASUS phone 72

## M

- Managing your call logs 41
- redialing your last-called number 42
  - saving to Contacts 41
- Messages 48
- replying to messages 48
  - sending messages 48
- MicroSD 9
- Mobile Manager 66
- Mobile network 56
- enabling 56

## N

- Nano SIM cards 37
- assigning a preferred nano SIM card 38
  - cellular data 38
  - renaming 37
  - SMS messages 38
- Night 53

## P

- Panorama
- see also Advanced camera features 53
- PowerMaster 67

## Q

- Quick settings 19
- adding features 19
  - removing features 19

## R

- Ringtone 23
- setting up 23
  - sound 23

## S

- Security 72
- Smart Dialing 40
- Social networking 47
- Sound Recorder 69
- launching Sound Recorder 69
  - pausing a recording 70
  - recording List 70
- Storage 71
- System 71
- updating 71
- System notifications 20

## T

- Tethering 59
- Wi-Fi Hotspot 59
- Time lapse
- see also Advanced camera features 53
- Touchscreen 15
- launching apps 15
  - moving or deleting items 15
  - moving through pages or screens 16
  - zooming in 16
  - zooming out 17

## W

- Wallpapers 22
- Weather 61
- launching 61
  - weather home screen 62
- Wi-Fi 56
- connecting 57
  - disabling 57
  - enabling 56
  - see also Wi-Fi Hotspot tethering 59

## Z

- ZenUI 7